

Predictability of VIX Jump Activities in Hedge Funds Returns

Abstract

The study indicates that Brownian motion, finite and infinite activity jumps are present in the ultra-high frequency VIX data. The total quadratic variation can be split into a continuous component of 29% and a jump component of 71%. Jump activities on ultra-high frequency VIX data are found informative in ex-ante identifying subgroups of hedge funds that deliver significant outperformance. In the months that follow large jump activities, strategies exposing to long tail risk tend to deliver positive performance in extreme market environments. In the months that follow small jump activities, possibly as a result of price reversals, most fund strategies exhibit losses in the jolting market environments. In the months that follow Brownian motion, strategies exposing to short volatility risk tend to deliver best performance. Hedge funds therefore deliver out-of-sample performance respective of types of jump activities on ultra-high frequency VIX.

JEL classification: G12; G13; G14

Keywords: Ultra-high frequency VIX; Infinite jump activity; Finite jump activity; Brownian motion; Hedge fund strategies

1. Introduction

The study undertakes a model-free analysis of the ultra-high frequency movements on the Chicago Board Options Exchange (CBOE) Volatility Index (VIX). The CBOE VIX is a key measure of market expectations of near-term volatility conveyed by S&P 500 Index (SPX) option prices. The VIX is widely referred to as a broad signal of investor sentiment and market volatility. Whaley (2000) terms it the “investor fear gauge” or the “market temperature” that can tell us how optimistic or pessimistic investors are. The VIX is also believed to be an indicator of investor appetite for risk (Dash and Moran, 2005).

Volatility in general, and VIX in particular, is widely thought to influence hedge fund returns (Drummond, 2005; Black, 2006; Dash and Moran, 2005; Bondarenko, 2007; Avramov, Kosowski, Naik and Teo, 2011). Hedge funds often employ derivatives, short-selling, and leverage to generate returns during extreme states of the equity market, and this can lead to hedge funds being exposed to higher-moment risks of the equity market. The first differences in VIX have been used to proxy market volatility in the hedge fund literature (Agarwal, Bakshi and Huij, 2009). There is evidence that VIX can be a proxy for other economic drivers of hedge fund returns (Anson, Ho and Silberstein, 2005), since the change in VIX is correlated with proxies for the credit, liquidity, and correlation risks (Brunnermeier and Pedersen, 2009;

Boyson, Stahel and Stulz, 2010; Dudley and Nimalendran, 2011). Table 1 reports the hedge fund return exposure to monthly change in VIX across quintiles of SPX over October 2003 to July 2010. Within each group, we further split funds into those that have positive change in VIX and those that do not. Diversified hedge funds are negatively correlated to changes in VIX, except in the subgroup of lowest SPX accompanied with decreasing VIX. Trend Following and Managed Futures hedge funds outperform at times of market downturns, whereas Macro, Equity Market Neutral and Distressed Restructuring hedge funds benefit from low- to moderate-volatility environments (Anson and Ho, 2003).

[Table 1 about here]

We report in Figure 1 the average monthly hedge fund returns of each quintile across five states. The SPX, VIX and absolute percentage change in VIX are respectively sorted into five states. Consistent with Fung and Hsieh (2001) and Agarwal and Naik (2004), the results show that a large number of equity-oriented hedge fund strategies such as Equity Hedge, Convertible Arbitrage and Distressed Restructuring exhibit payoffs resembling a short position in an equity index put option and therefore bear significant left-tail risk. Other strategies such as Trend Following and Managed Futures deliver returns resembling those of a portfolio of straddles. Our evidence suggests that the success of these strategies hinges on the behavior of

various economic indicators. Therefore, conditioning on jump activities on VIX may allow one to better predict hedge fund returns over the volatility cycle.

[Figure 1 about here]

The factors that affect movements in the VIX, however, are always in flux. Being able to distinguish between continuity, small jumps, and large jumps in sample path of VIX movements and determining the relative magnitude of those components should be a welcome addition to the toolkit of investors, hedge fund managers, and regulators. It is thereby economically important to develop a statistical understanding of the fine structure of jumps in VIX.

Statistical tests are developed to determine on the basis of the observed log-returns whether a jump component is present (Aït-Sahalia and Jacod, 2009*b*), whether the jumps have finite or infinite activity (Aït-Sahalia and Jacod, 2012), an estimate of a degree of jump activity (Aït-Sahalia and Jacod, 2009*a*), and whether a Brownian motion is needed when infinite activity jumps are included (Aït-Sahalia and Jacod, 2010). Alternative methodologies exist for studying the continuous and jump components from discretely sampled semimartingales, including (i) splitting the quadratic variation into continuous and discontinuous proportions to test for the presence of jumps (Aït-Sahalia, 2002; Carr and Wu, 2003; Barndorff-Nielsen and Shephard, 2004; Huang and Tauchen, 2005; Andersen, Bollerslev and Diebold, 2007;

Jiang and Oomen, 2008; Lee and Mykland, 2008; Lee and Hannig, 2010), (ii) using the statistic from Aït-Sahalia and Jacod (2009*b*) to identify the presence of a Brownian component (Tauchn and Todorov, 2010), and (iii) using threshold or truncation-based estimators of the continuous component of the quadratic variation to test for the presence of a continuous component (Mancini, 2001).

The study uses the methodology developed by Aït-Sahalia (2004), Aït-Sahalia and Jacod (2009*a,b*) and Aït-Sahalia and Jacod (2010, 2012), which is a unified approach, to detect if there exists Brownian motion, infinite activities (small jumps), or finite activities (big jumps) in the ultra-high frequency VIX data.¹ The basic methodology consists in constructing realized power variations of VIX increments, suitably truncated and/or sampled at different frequencies. For this to work, the VIX data need to have a lot of depth; that is, highly traded, down to the 15 seconds in this study.

This paper begins by undertaking various model-free tests for presence of a continuous component, small jumps and large jumps from discrete observations compiled from movements in ultra-high frequency VIX data. Empirical results indicate that a continuous component, finite and infinite activity jumps are present in the ultra-high frequency VIX data. The degree of jump activity from Q4 2003 to Q2

¹ The authors fully acknowledge Aït-Sahalia and Jacod's MATLAB codes to generate various test statistics, which are available on the website at <http://www.princeton.edu/~yacine>.

2010 is in the range from 1.71 to 1.95, indicating a very high degree of jump activity. The total quadratic variation can be split into a continuous component of 29% and a jump component of 71%, which by construction is attributable to small and big jumps. Relative to our findings, some (semi)parametric evidence for presence of jumps in the spot volatility has been proposed by Eraker, Johannes and Polson (2003), Eraker (2004), Broadie, Chernov and Johannes (2007), Todorov (2010), and Bjursell, Wang and Webb (2011).

Since VIX contains ex-ante volatility, it may, in theory, have some predictive power in hedge fund returns that are affected by volatility. By examining out-of-sample hedge fund returns, jump activities on ultra-high frequency VIX data are informative in ex-ante identifying subgroups of hedge funds that deliver significant outperformance. In the months that follow large jumps, strategies exposing to long volatility and extreme market risk such as Trend Following and Managed Futures hedge funds tend to deliver positive performance in extreme market environments. In the months that follow small jumps, possibly as a result of trading illiquidity, most fund strategies exhibit losses in the jumping-around market environments. In the months that follow Brownian motion, strategies exposing to short volatility such as Risk Arbitrage, Merge Arbitrage, Event Driven, Equity Hedge and Relative Value tend to deliver best performance.

To summarize, the study goes nicely with the literature, trying to price VIX futures and options with either diffusion or jumps or both, or market-timing hedge fund strategies. The study points out to which type of models or hedge fund strategies researchers and practitioners should focus on when there exists purely Brownian motion, or jumps, or some combinations in the ultra-high frequency VIX data.

The paper is organized as follows. Section 2 presents the measurement device designed to analyze which components are present, in what relative proportions, and the degree of activity of the jumps. Section 3 describes the data and reports the results of applying the measure devices to the time series of ultra-high frequency VIX. Section 4 uses jump activities on VIX as market-timing signals to exploit predictability in the performance of hedge fund strategies. Section 5 concludes.

2. Methodology

2.1 Measurement Device

The study examines which component(s) of jumps, finite or infinite activity, and a continuous component, originating in a given unobserved path, need to be included in the observed ultra-high frequency VIX and their relative magnitude. The study uses 15-second VIX data to analyze their finer characteristics such as the degree of activity of jumps. Consider $[T/\Delta_n]$ observed increments of logarithmic VIX on

$[0, T]$, which are collected at a discrete sampling interval Δ_n :

$$\Delta_n^i \ln VIX \equiv \ln VIX_{i\Delta_n}^* + \varepsilon_i - (\ln VIX_{(i-1)\Delta_n}^* + \varepsilon_{i-1}) \quad (1)$$

where $(\ln VIX_{i\Delta_n}^*, \ln VIX_{(i-1)\Delta_n}^*)$ denote the true values; $(\varepsilon_i, \varepsilon_{i-1})$ are *i.i.d.* market microstructure noise, not depending of the observation frequency.

Following Aït-Sahalia and Jacod (2012), the realized power variations of these increments, suitably truncated and/or sampled at different frequencies, are defined as

$$B(p, u_n, \Delta_n)_T = \sum_{i=1}^{\lfloor T/\Delta_n \rfloor} |\Delta_n^i \ln VIX|^p \times 1_{\{|\Delta_n^i \ln VIX| \leq u_n\}} \quad (2)$$

where $p \geq 0$ is the power variable to accentuate either the continuous ($p < 2$) or jump ($p > 2$) components or to keep them both present ($p = 2$). A sequence of truncation levels $u_n > 0$ can eliminate or retain only the increments larger than u_n . Typically the truncation levels u_n are usually achieved by taking η units of standard deviations of the continuous part

$$u_n = \eta \sigma_S \sqrt{\Delta_n} \quad (3)$$

with $\eta = (\alpha/\sigma_S) \Delta_n^{\varpi-1/2}$ for some constants $\varpi \in (0, 1/2)$ and $\alpha \in (0, 1)$. The behavior of the truncated power variations $B(p, u_n, \Delta_n)_T$ depends on the degree of activity of the jumps when there are infinitely many jumps.

Retaining only the increments larger than u_n is written as

$$U(p, u_n, \Delta_n)_T = \sum_{i=1}^{\lfloor T/\Delta_n \rfloor} |\Delta_n^i \ln VIX|^p \times 1_{\{|\Delta_n^i \ln VIX| > u_n\}} \quad (4)$$

, which can allow one to eliminate all the increments from the continuous part of the

model. Then obviously

$$U(p, u_n, \Delta_n)_T = B(p, \infty, \Delta_n)_T - B(p, u_n, \Delta_n)_T \quad (5)$$

Placing $u_n \rightarrow \infty$, $B(p, \infty, \Delta_n)$, gives no truncation at all. The number of increments of $\ln VIX$ from the jump part of the model is therefore counted as taking the power $p = 0$:

$$U(0, u_n, \Delta_n)_T = \sum_{i=1}^{\lceil T/\Delta_n \rceil} 1_{\{|\Delta_n^i \ln VIX| > u_n\}} \quad (6)$$

The study exploits the different asymptotic behavior of the variations $B(p, u_n, \Delta_n)$ and/or $U(p, u_n, \Delta_n)$ by varying the power p , the truncation level u_n and the sampling frequency Δ_n . Formally, using observed high-frequency data originating in a given unobserved path, the study adopts the power variations method to address in which set(s) of jumps, finite or infinite activity, and Brownian motion the path of $\ln VIX$ defined pathwise on $[0, T]$ contains.

2.2 Ultra-High Frequency VIX Data

The study uses ultra-high frequency VIX transactions from October 1, 2003 to June 30, 2010. The data source is the TickData database. The VIX indicator is only updated by the exchange every 15 seconds since Q4 2003; the VIX series are thus sampled every 15 seconds. The study does not include the overnight changes in VIX. Figure 2 shows the tail distributions of the log differences from VIX over the sample period, respectively sampled at 15-second and daily frequencies. The 15-second VIX

log differences centralize around zero with asymmetric long tails in relatively low probabilities. This histogram with large positive skewness and extremely high kurtosis is extraordinarily different from the one in the daily VIX log differences, which has much smaller positive skewness (almost insignificantly) and much less kurtosis (but still greater than 3). Being able to distinguish the distinct features between ultra-high frequency and daily data is therefore important, as it has implications for many high frequency trading strategies that rely on specific components of the model being present or absent.

[Figure 2 about here]

Using ultra-high frequency log differences as inputs, the study deconstructs the observed series back into its original components, continuous and jumps. Each one of the statistics is computed separately for each quarter of the sample period. The truncation cutoff level u_n is expressed in terms of a number η of standard deviations of the continuous part of the semimartingale. That initial annualized standard deviation estimate $\sigma_S = 0.3467$ that is obtained by using $B(2, 4 \times \hat{\sigma}_S \sqrt{\Delta_n}, \Delta_n)$ with the median $\hat{\sigma}_S = 0.25$ of annualized standard deviation of daily changes in logarithmic VIX, serves to identify a reasonable range of values. The study then uses different multiples of it for the truncation level u_n .

3. Empirical Results

3.1 Jumps: Present or Not

The test statistic S_j discriminates between jumps and no jumps based on observed data, but not among different types of jumps. Taking microstructure noise into account, the test statistic is given by

$$S_j(p, k, \Delta_n) = \frac{B(p, \infty, k\Delta_n)}{B(p, \infty, \Delta_n)} \Big|_{p>2, k\geq 2}$$

$$\xrightarrow{\mathbb{P}} \begin{cases} 1/k & \text{additive noise dominates} \\ 1/\sqrt{k} & \text{rounding error dominates (and jumps have finite activity)} \\ 1 & \text{jumps present and no significant noise} \\ k^{p/2-1} & \text{no jumps present and no significant noise} \end{cases} \quad (7)$$

The histogram for empirical values of S_j is shown in Panel A of Figure 3. The data for the histogram are produced by computing S_j for the twenty-seven quarters from Q4 2003 to Q2 2010, and for a range of values of p from 3 to 6, Δ_n from 15 seconds to 2 minutes, and $k = 2, 3$. As indicated in (7), values around 1 are indicative of jumps presence and the noise is not the major concern. Panel B of Figure 3 displays the mean value of S_j across values of p and k and the twenty-seven quarters as a function of Δ_n . For very small values of Δ_n , the noise dominates (limits below 1), then the limit is around 1 as Δ_n increases away from the noise-dominated frequencies. In general, the study finds that the average of S_j stays around 1 for the majority of its sampling frequencies. The conclusion from S_j is that the noise is not a major concern at the ultra high frequencies, and the evidence points towards the

presence of jumps.

[Figure 3 about here]

This conclusion confirms simple inspection of the tails of the 15-second log-return distribution in Figure 2. Clearly, a continuous component alone would be very unlikely to generate such returns in such tails.

3.2 Jumps: Finite or Infinite Activity

S_J tests whether jumps are likely to be present, but it cannot distinguish between finite and infinite activity jumps. The statistic S_{FA} , which is like S_J with the addition of truncation, discriminates between finite and infinite activity jumps based on observed data. Taking microstructure noise into account, the test statistic is given by

$$S_{FA}(p, u_n, k, \Delta_n) = \frac{B(p, u_n, k\Delta_n)}{B(p, u_n, \Delta_n)} \Big|_{p>2, k \geq 2}$$

$$\mathbb{P} \rightarrow \begin{cases} 1/k & \text{additive noise dominates} \\ \text{no limit} & \text{rounding error dominates} \\ 1 & \text{infinite activity jumps present and no significant noise} \\ k^{p/2-1} & \text{finite activity jumps present and no significant noise} \end{cases} \quad (8)$$

The histogram in Panel A of Figure 4 is produced by computing for the twenty-seven quarters from Q4 2003 to Q2 2010 the value of S_{FA} for a range of values of p from 3 to 6, η from 5 to 10 standard deviations, Δ_n from 15 seconds to 2 minutes, and $k=2, 3$. The result shows that the empirical values of S_{FA} are distributed around 1, which is indicative of infinite activity jumps and the noise is not

the major concern. The justification is that if only a finite number of jumps had been present, then the statistic should have behaved as if the process were continuous.

Panel B of Figure 4 presents the mean value of S_{FA} across the twenty-seven quarters and values of p , η and k as a function of Δ_n . For very small values of Δ_n the limit is below 1 as indicative of noise dominating, then the infinite jump activity dominates (limits around 1) as Δ_n increases away from the noise-dominated frequencies. Based on the VIX data, the statistic S_{FA} identifies the likely presence of infinite activity jumps.

[Figure 4 about here]

For the robustness check, the study tests the null being infinite activity jumps and the alternative of finite activity jump by choosing $\gamma > 1$ and $p' > p > 2$ and the S_{IA} test statistic as follows:

$$S_{IA}(p, u_n, \gamma, \Delta_n) = \frac{B(p', \gamma u_n, \Delta_n) B(p, u_n, \Delta_n)}{B(p', u_n, \Delta_n) B(p, \gamma u_n, \Delta_n)} \Big|_{p' > p > 2, \gamma > 1}$$

$$\xrightarrow{\mathbb{P}} \begin{cases} 1 & \text{finite activity jumps present and no significant noise} \\ \gamma^{p'-p} & \text{infinite activity jumps present and no significant noise} \end{cases} \quad (9)$$

As shown in Figure 5, the statistic S_{IA} identifies the likely presence of finite jumps.

[Figure 5 about here]

3.3 Brownian Motion: Present or Not

When infinitely many jumps are included, there are a number of models in the literature which dispense with the Brownian motion. The price process is then a

purely discontinuous Lévy process with infinite activity jumps, or more generally is driven by such a process. In order to decide whether the Brownian motion really exhibits in the data, or if it can be forgone with in favor of a pure jump process with infinite activity, the test statistic S_W discriminates between the Brownian motion and pure infinite activity jumps based on observed data. The null hypothesis is set to detect the presence of the Brownian motion, whereas the alternative assumes that there is no Brownian motion but exist infinitely active jumps. Taking microstructure noise into account, the test statistic is given by

$$S_W(p, u_n, k, \Delta_n) = \frac{B(p, u_n, \Delta_n)}{B(p, u_n, k\Delta_n)} \Big|_{1 < p < 2, k \geq 2}$$

$$\xrightarrow{\mathbb{P}} \begin{cases} 1/k & \text{additive noise dominates} \\ \text{no limit} & \text{rounding error dominates} \\ 1 & \text{no Brownian motion and no significant noise} \\ k^{1-p/2} & \text{Brownian motion present and no significant noise} \end{cases} \quad (10)$$

Panel A of Figure 6 displays a histogram of the distribution of S_W obtained by computing its value for the twenty-seven quarters from Q4 2003 to Q2 2010 for a range of values of p from 1 to 1.75, η from 5 to 10 standard deviations, Δ_n from 15 seconds to 2 minutes, and $k = 2, 3$. The majority of empirical estimates are on the side of the limit arising in the presence of a continuous component. As the sampling frequency increases, the noise becomes more of a factor, and for very high sampling frequencies, the results are indicative of little noise driving the asymptotics. This is confirmed by Panel B of Figure 6 which displays the mean value of S_W across the

twenty-seven quarters and values of p , η and k as a function of Δ_n . As the study downsamples away from the noise-dominated frequencies, the average value of the statistic settles down towards the 1.5 indicating presence of a Brownian motion. The log-price process is not driven by a purely discontinuous Lévy process with infinite activity jumps.

[Figure 6 about here]

3.4 Relative Magnitude of the Components

The previous empirical results indicate the presence of a jump and a continuous component. This section examines what fraction of the quadratic variation (QV) is attributable to the continuous and jump components. The relative magnitude of the two jump and continuous components in the total QV after taking microstructure noise into account is determined as

$$\left\{ \begin{array}{ll} 0 & \text{additive noise dominates} \\ 0 & \text{rounding error dominates} \\ \frac{B(2, u_n, \Delta_n)}{B(2, \infty, \Delta_n)} & \begin{array}{l} \% \text{ of } QV \text{ due to the continuous component} \\ \text{and no significant noise} \end{array} \\ 1 - \frac{B(2, u_n, \Delta_n)}{B(2, \infty, \Delta_n)} & \begin{array}{l} \% \text{ of } QV \text{ due to the jump component} \\ \text{and no significant noise} \end{array} \end{array} \right. \quad (11)$$

Since the conclusion from S_J , S_{FA} and S_W statistics is that the noise is not the major concern, it is feasible to calculate the relative magnitude of the two jump and continuous components in the total QV . Panel A of Figure 7 displays empirical distribution of the proportion of QV attributable to the Brownian component using

the twenty-seven quarters, values of η ranging from 2 to 5 standard deviations, and Δ_n from 15 seconds to 2 minutes. The study finds values attributable to the continuous component around 29%. In Panel B of Figure 7, the average fraction of QV attributable to the continuous component is fairly stable as the sampling frequency varies.

[Figure 7 about here]

The percentage of QV attributable to jumps can be further decomposed into a small jump and a big jump component depending on the cutoff level ε :

$$\%QV \text{ due to big jumps} = \frac{U(2,\varepsilon,\Delta_n)}{B(2,\infty,\Delta_n)} \quad (12)$$

$$\%QV \text{ due to small jumps} = 1 - \frac{B(2,u_n,\Delta_n)}{B(2,\infty,\Delta_n)} - \frac{U(2,\varepsilon,\Delta_n)}{B(2,\infty,\Delta_n)} \quad (13)$$

3.5 Estimating the Degree of Jump Activity

The previous statistics above indicate the presence of Brownian motion, finite activity jumps and infinite activity jumps in the data. Following Aït-Sahalia and Jacod (2012), the study indexes the activity of $\ln VIX$ as the Blumenthal-Gettoor index β that characterizes the local behavior of the Lévy measure ν near 0.² Aït-Sahalia and Jacod (2012) propose an estimator of β in the presence of a continuous component of the model; that is, the test statistic allows one to eliminate the increments due to the continuous component. The test statistic is based on varying the actual cutoff level:

² The activity index is 2 asymptotically in a continuous martingale and 0 in a purely finite activity jumps model.

fix $0 < \eta < \eta'$ and consider two cutoffs $u_n = \eta \sigma_S \sqrt{\Delta_n}$ and $u'_n = \eta' \sigma_S \sqrt{\Delta_n}$ with $\gamma = \eta'/\eta$:

$$\beta_n(\eta, \gamma, \Delta_n)|_{\gamma > 1} = \ln \left(\frac{U(0, u_n, \Delta_n)}{U(0, \gamma u_n, \Delta_n)} \right) / \ln(\gamma) \quad (14)$$

Estimating β requires the largest sample size due to its reliance on truncating from the right in the power variations U . The degree of infinite jump activity β is thus estimated using a number of observations to the right of a cutoff u_n given by 2 standard deviations of the continuous part, values of γ ranging from 1.50 to 1.75, and various sampling frequencies from 15 seconds to 2 minutes on a quarterly basis.

Panel A of Figure 8 displays the empirical distribution of the index of jump activity β computed for the twenty-seven quarters from Q4 2003 to Q2 2010. Panel B of Figure 8 presents the average value of estimated β as a function of the sampling interval Δ_n employed. In the presence of Brownian motion and infinite activity jumps, the estimated β is in the range from 1.71 to 1.95, indicating a very high degree of jump activity. A slightly dissenting result is Tauchen and Todorov (2011) who suggest that the latent spot volatility, extracted from high frequency VIX data, is a pure jump process with jumps of infinite variation and activity close to that of a continuous martingale.

[Figure 8 about here]

4. Market Timing Hedge Funds

This section classifies ultra-high VIX activities as Brownian motion, small jumps and large jumps, and uses these categories augmented with the sign of change in VIX as predictive variables to see whether jumping, moving around randomly, or Brownian motion could predict hedge fund performance.

The study analyzes the ex-post out-of-sample performance of hedge funds using monthly returns reported in the Dow Jones Credit Suisse, Hedge Fund Research, and Institutional Advisory Services Group datasets over November 2003 to July 2010 — a time period that covers both market upturns and downturns, as well as relatively calm and turbulent periods. Following Agarwal, Daniel and Naik (2009) and Avramov, Kosowski, Naik and Teo (2011) to classify hedge funds into different strategy classes, the multitude of hedge funds we use includes five investment categories: (i) directional traders consisting of Managed Futures, Macro/CTA and Trend Following, (ii) relative value consisting of Relative Value Arbitrage and Convertible Arbitrage, (iii) security selection consisting of Equity Hedge and Equity Market Neutral, (iv) multi-process consisting of Event Driven, Merger Arbitrage, Distressed Restructuring and Risk Arbitrage, and (v) fund of funds consisting of Equal Weighted and Global.³

To understand the impact that jump activities on VIX have on fund performance, the study sorts funds into three groups based on whether their previous months are

³ We acknowledge that there are many issues with hedge fund databases, such as selection, survivorship and instant history biases, which provide an upward bias to hedge fund returns. The purpose of our research is not to determine the absolute size of hedge fund returns, but rather to observe how hedge fund returns react to VIX activities.

dominated by large jumps, small jump, or Brownian motion. Next, within each group, the study further splits funds into those that have positive monthly change in VIX in their previous months and those that do not. The jump activities are detected based on intraday VIX activities within one month of data and are reformed every month. Given the sample period October 2003 to June 2010, there are in total 60 months dominated by large jumps including the Q4 2008 financial crisis, 3 by small jumps, and 18 by Brownian motion.⁴ Table 2 illustrates in-sample and out-of-sample market exposure to Brownian motion, small jumps and big jumps, respectively. The big jumps are usually accompanied with high VIX, high and, in particular, low SPX, as well as large variation in absolute percentage monthly changes in VIX. The Brownian motion usually exists with low VIX, medium SPX and low absolute percentage monthly change in VIX. Noticeably, in-sample market exposure of absolute percentage monthly change in VIX to small jumps significantly drops into a relatively low out-of-sample level.

[Table 2 about here]

Table 3 and Figure 9 evaluate the out-of-sample performance of hedge funds in each sub-group over the sample period. Traditional risk/return measures such as

⁴ The months dominated by small jumps consist of June 2006, July 2006 and July 2007, while those mainly attributable to Brownian motion include October-November 2003, February-March 2004, May-August 2004, October 2004, January 2005, June 2005, April 2006, August 2006, October 2006, January 2007, April 2007, June 2007 and March 2010. The rest of the sample is dominated by large jumps.

Sharpe ratios and standard deviations are inadequate to measure risk for hedge funds with highly non-normal distributions and large tails. These are the three measures to gauge hedge performance when applied to a single hedge fund strategy: (i) using maximum drawdown as a downside risk measure; (ii) using adjusted conditional Value-at-Risk as a measure of extreme tail risk; and (iii) using extended Sharpe ratio as a measure of the excess return relative to risk with highly non-normal distributions and large tails.

First measure is the magnitude of maximum drawdown for monthly returns on the hedge fund:

$$MaxDD(T; R) = \max_{0 \leq t \leq T} [R_{0 \leq \tau \leq t}^{peak} - R(t)] \quad (15)$$

where $R(t)$ is the out-of-sample monthly return respective of VIX jump activities, and $R_{0 \leq \tau \leq t}^{peak} = \max_{0 \leq \tau < t} [R(\tau)]$ is the maximum monthly return in the $[0, t]$ period. $MaxDD(T)$ is defined as the maximum sustained decline (peak to trough) for period $[0, T]$, which provides an intuitive and well-understood empirical measure of the loss arising from potential extreme events (Magdon-Ismail et al., 2004; Magdon-Ismail and Atiya, 2004).

Second measure is the magnitude of the expected shortfall or conditional Value-at-Risk ($CVaR$) (Rockafellar and Uryasev, 2002) for monthly returns on the hedged fund at the confidence level $1 - \varphi$:

$$\begin{aligned}
CVaR_{1-\varphi}(R_{CF}) &= \mu(R) + \sigma(R) \cdot E(z_{cf,1-\kappa} | \kappa > 1 - \varphi) \\
&= \mu(R) + \sigma(R) \times E \left[\begin{array}{l} z_{1-\kappa} + \frac{1}{6}(z_{1-\kappa}^2 - 1)S(R) \\ + \frac{1}{24}(z_{1-\kappa}^3 - 3z_{1-\kappa})K(R) \\ - \frac{1}{36}(2z_{1-\kappa}^3 - 5z_{1-\kappa})S(R)^2 \end{array} \middle| \kappa > 1 - \varphi \right] \quad (16)
\end{aligned}$$

where R_{CF} is the monthly returns on the hedge fund that uses the Cornish-Fisher expansion to incorporate skewness and kurtosis into the return distribution (Cornish and Fisher, 1938; Baillie and Bollerslev, 1992; Liang and Park, 2010). $z_{1-\kappa}$ is the critical value for probability $1 - \kappa$ with standard normal distribution (e.g. $z_{1-\kappa} = -1.64$ at $\kappa = 95\%$), while μ , σ , S and K follow the standard definitions of mean, volatility, skewness and excess kurtosis, respectively, as computed from the monthly returns on the hedge fund.

Third measure is the magnitude of the extended Sharpe ratio (denoted ESR) for monthly returns on the hedge fund:

$$ESR = \frac{1}{z_{\pi}^- \sigma_{\pi}} \left(e_{\pi} + \frac{1}{2}(z_{\pi}^+ \sigma_{\pi})^2 - \frac{1}{2}(z_{\pi}^- \sigma_{\pi})^2 \right) \quad (17)$$

where e_{π} = excess monthly return rate of the hedge fund π ; σ_{π} = volatility of π ;

$$z_{\pi}^+ = \frac{\max(z_{cf,\kappa}(\pi), 0)}{z_{\kappa}}; \quad z_{\pi}^- = \frac{\min(z_{cf,1-\kappa}(\pi), 0)}{z_{1-\kappa}}; \quad \text{for example, } z_{\kappa} = 2.33 \text{ at } \kappa = 1\%,$$

$z_{1-\kappa} = -2.33$ at $1 - \kappa = 99\%$. Note that ESR is an omega-function-like measure.

The numerator is a measure of upside cumulants while the standard deviation of returns in the denominator is replaced by a measure of downside cumulants (Karatzas and Shreve, 1998; Fernholz, 2002; Keating and Shadwick, 2002). This is a more

balanced measure from the perspective of not only minimizing risk (which also tends to minimize returns) but also achieving a balance between upside and downside moments, and is generally consistent with the real-world practice in that hedge fund managers tend to take risk to preserve upside.

The hedge funds are found to deliver performance respective of market conditions. There is always some volatility-based risk in any hedge fund, but these sharp changes in value can be positive as well as negative. In one or more specific market conditions, market volatility can be exploited to the benefit of investors. Big jumps on VIX offer potentially sizable directions of markets to those who long or short markets attempting to capture their rise and fall, while Brownian motion on VIX attract trading styles of investment that is expected to be long and short comparable securities to capture value while eliminating the systematic risk of the markets. Finally, small infinite activity jumps on VIX are more likely to reflect immediate jolting market environment such as trading illiquidity.

Trend Following, Managed Futures and Macro funds employ the market timing approach that bets on the directions of markets dynamically to achieve absolute return targets. Therefore, they are found to outperform in the months following big jumps relative to the months following small jumps and Brownian motion. In contrast, Relative Value, Equity Hedge, Event Driven, Convertible Arbitrage and Distressed

Restructuring funds are the non-directional style that attempt to extract value from a set of diversified arbitrage opportunities targeted at exploiting structural anomalies of markets. As a non-directional approach, it is a low volatility approach, and the returns resemble that of a high yielding bond-like instrument without the equivalent interest rate or credit risk. They are found to outperform in the months following Brownian motion. Further, many hedge funds outperform by buying illiquid securities and short-selling liquid securities. Naturally such funds are also susceptible to liquidity shocks like the 2008 Lehman Brothers collapse. When markets are illiquid, hedge fund performance is highly sensitive to changes in funding liquidity as well as asset liquidity and leads to higher volatility. Perhaps arbitrage funds in general are short liquidity as well as short volatility. They perform best in calm markets, and worse in the jumping-around markets that are driven by small jumps on VIX. It is likely that a common exposure to preceding small jumps on VIX drives negative performance in most of the funds. The returns of Risk Arbitrage, Convertible Arbitrage and Merger Arbitrage funds are the only investment styles that achieve positive average returns in the months following small jumps. However, only Merger Arbitrage funds escape the downturn in performance during the period following small jumps accompanied with increasing VIX. As a result, the ESR of Merger Arbitrage is found positive.

[Table 3 about here]

[Figure 9 about here]

Hedge funds are considered riskier than other types of investment vehicles because they employ strategies which can result in sharp losses if managed poorly. The study uses the following regression specification to evaluate the economic significance of manager skill conditional on jump activities on VIX. To adjust for risk, the study evaluates the performance of hedge funds relative to the Fung and Hsieh (2004) seven-factor model:⁵

$$r_{i,t} = \sum_{k=1}^7 \beta_{i,k} F_{k,t} + \alpha_{i,con} D_{con,t-1} + \alpha_{i,sj} D_{sj,t-1} + \alpha_{i,bj} D_{bj,t-1} + \varepsilon_{i,t} \quad (18)$$

where $r_{i,t}$ is the return on fund i in excess of the one-month Treasury bill return (the risk-free rate) in month t . $F_{k,t}$ is the k th risk factor of the benchmark factor model, including (i) the S&P 500 return minus the risk-free rate, $SNPMRF$; (ii) the Russell 2000 minus S&P 500 monthly total return, $SCMLC$; (iii) the monthly change in the 10-year Treasury constant maturity yield, $BD10RET$; (iv) monthly changes in the credit spread defined as Moody's Baa bond yield minus the 10-year Treasury bond yield, $BAAMTSY$; and (v) excess returns on portfolios of lookback straddles on bonds ($PTFSBD$), currencies ($PTFSFX$) and commodities ($PTFSCOM$).⁶ The data on $SNPMRF$, $SCMLC$, $BD10RET$, and $BAAMTSY$ are available from Datastream.

⁵ Our results are not sensitive to augmenting the Fung and Hsieh (2004) model with the MSCI emerging markets index excess return, the Fama and French (1993) high-minus-low book-to-market factor, the Jegadeesh and Titman (1993) momentum factor, or the Pástor and Stambaugh (2003) liquidity factor.

⁶ The returns on $PTFSBD$, $PTFSFX$ and $PTFSCOM$ are obtained from Fung and Hsieh's data library <http://faculty.fuqua.duke.edu/~dah7/HFRFData.html/>.

Finally, $\varepsilon_{i,t}$ is fund i 's residual return in month t . The three dummy variables are a convenient means of building discrete shifts of the excess fund returns in accordance with jump activities on VIX in month $t-1$. We use the dummy variables so that we can pool different jump activities in the same regression. Specifically, $D_{bj,t-1}$ equals 1 if month $t-1$ is dominated by large jumps, and 0 otherwise. Similarly, $D_{con,t-1}$ equals 1 if month $t-1$ is dominated by Brownian motion, and 0 otherwise. Finally, $D_{sj,t-1}$ equals 1 if month $t-1$ is dominated by small jumps, and 0 otherwise.

The intercept, or alpha, in Table 4, Figures 10 and 11 shows the risk-adjusted return to the level of expertise of the manager. The thirteen hedge funds, on average, earn a monthly alpha of 0.4243% and 0.6553% in the months following Brownian motion and big jumps, respectively, which lead to a monthly average return of 0.3487% and 0.2054%. In contrast, the return following the months dominated by small jumps averages -0.8823%, because the funds have moved to a negative alpha of -1.0651% per month. This indicates that most of hedge fund managers fail to time occasional and small illiquidity by adjusting their portfolios' market exposure.

The results are consistent across the most individual hedge fund styles. In almost every hedge style, the big-jump and Brownian regimes have the positive impact on subsequent hedge fund alphas with the small-jump regime having the negative impact on subsequent hedge fund return alphas. There are three exceptions.

The first is Risk Arbitrage and Merger Arbitrage hedge funds where big-jump VIX regime has a negative impact on subsequent alphas. Second, Risk Arbitrage, Merger Arbitrage and Trend Following hedge funds show negative impact on subsequent alphas from VIX in Brownian motion regime. Third, with Merger Arbitrage and Distressed Restructuring hedge funds, the alphas following small-jump regime are positive. It is evidence that hedge fund alphas are enhanced more by preceding extreme volatility levels, both high and low, than by preceding mid-volatility levels.

[Table 4 about here]

[Figure 10 about here]

[Figure 11 about here]

To summarize, our results are consistent with the view that allowing for predictability based on jump activities on VIX is important in ex-ante identifying subgroups of hedge funds that deliver significant outperformance. Conditioning on large VIX jumps, funds that long volatility (such as Trend Following and Managed Futures) deliver significantly higher out-of-sample returns relative to funds that short volatility (such as Relative Value, Equity Hedge, Event Driven and Distressed Restructuring), which coincides with extreme bear markets. Many shorting volatility strategies, following the spike in volatility in Q4 2008, have been susceptible to sudden large losses and were exposed to the high (positive) downside market beta.

Long volatility strategies have gained popularity since 2008, primarily as a hedge against catastrophic scenarios, often referred to as “tail risk.”

In the months that follow Brownian motion as a result of excluding the period with the 2008 financial crisis, hedge funds with negative volatility exposure tend to outperform those with positive volatility exposure. Using volatility as an asset class prior to the Q4 2008 financial crisis, therefore, tends to capture historical excess returns by selling volatility as well as various strategies involving combinations of option positions. This is consistent with the extant literature including Hafner and Wallmeier (2008) who analyze the implications of optimal investments in sizable short positions on variance swaps. Egloff, Leippold and Wu (2010) have an extensive analysis of how variance swaps fit into optimal portfolios in dynamic context that improve the ability of the investor to hedge time-variations in investment opportunities. Finally, in the months that follow small jumps on VIX, possibly as a result of trading illiquidity, the majority of hedge funds deliver negative returns, in particular when augmented with positive change in VIX. Therefore, detecting jump activities on ultra-high frequency VIX data can help forecast cross-sectional differences in hedge fund performance through their exposure to long or short volatility risk evaluated conditional on different VIX jump quintiles.

5. Conclusions

The empirical results of the spectrogram methodology indicate the presence of a continuous component, occasional large jumps, and infinite activity jumps with a fairly high degree of jump activity in the ultra-high frequency VIX data. Jump components represent approximately 71% of the total quadratic variation with a degree of infinite activity jumps in the range from 1.71 to 1.95. To examine the impact of nature of VIX jump activities on market timing of hedge fund strategies, this study evaluates out-of-sample monthly performance of hedge funds conditioning on the jump activities on ultra-high frequency VIX data. The results suggest the economic value of predictability obtains for short-volatility strategies in the months that follow Brownian motion, while the strategies with long tail risk outperform in the months that follow large VIX jumps. In the months that follow small jump activities, possibly as a result of price reversals, most hedge fund strategies exhibit losses in the jolting market environments. Our evidence suggests that the success of hedge fund strategies hinges on the behavior of VIX jump activities.

The contribution of this study is twofold. First, the study distinguishes between continuity, small jumps and large jumps on ultra-high frequency VIX data, and determines their relative magnitudes. Our results are informative as to the relevant directions such volatility traders may take. Second, allowing for predictability based on jump activities on VIX is important in ex-ante identifying subgroups of hedge

funds that deliver significant outperformance.

References

- Agarwal, Vikas, Gurdip Bakshi, and Joop Huij, 2009, Do higher-moment equity risks explain hedge fund returns?, Working Paper, University of Maryland.
- Agarwal, Vikas, Naveen D. Daniel, and Narayan Y. Naik, 2009, Flow, performance, and managerial incentives in the hedge fund industry, *Journal of Finance* 64, 2221–2256.
- Agarwal, Vikas, and Narayan Y. Naik, 2004, Risks and portfolio decisions involving hedge funds, *Review of Financial Studies* 17, 63–98.
- Aït-Sahalia, Yacine, 2002, Telling from discrete data whether the underlying continuous-time model is a diffusion, *Journal of Finance* 57, 2075–2112.
- Aït-Sahalia, Yacine, 2004, Disentangling diffusion from jumps, *Journal of Financial Economics* 74, 487–528.
- Aït-Sahalia, Yacine, and Jean Jacod, 2009a, Estimating the degree of activity of jumps in high frequency financial data, *Annals of Statistics* 37, 2202–2244.
- Aït-Sahalia, Yacine, and Jean Jacod, 2009b, Testing for jumps in a discretely observed process, *Annals of Statistics* 37, 184–222.
- Aït-Sahalia, Yacine, and Jean Jacod, 2010, Is Brownian motion necessary to model high frequency data?, *Annals of Statistics* 2010, 38, 3093–3128.
- Aït-Sahalia, Yacine, and Jean Jacod, 2012, Analyzing the spectrum of asset returns:

- Jump and volatility components in high frequency data, *Journal of Economic Literature*, forthcoming.
- Andersen, Torben G., Tim Bollerslev, and Francis X. Diebold, 2007, Roughing it up: Including jump components in the measurement, modeling, and forecasting of return volatility, *Review of Economics and Statistics* 89, 701–720.
- Anson, Mark, and Ho Ho, 2003, Short volatility strategies: Identification, measurement, and risk management, *Journal of Investment Management* 1, 30–43.
- Anson, Mark, Ho Ho, and Kurt W. Silberstein, 2005, Volatility regimes and hedge fund management, in G.N. Gregoriou, G. Hübner, N. Papageorgiou and F. Rouah, eds: *Hedge Funds: Insights in Performance Measurement, Risk Analysis, and Portfolio Allocation* (John Wiley & Sons, Inc., New Jersey), pp. 437-452.
- Avramov, Doron, Robert Kosowski, Narayan Y. Naik, and Melvyn Teo, 2011, Hedge funds, managerial skill, and macroeconomic variables, *Journal of Financial Economics* 99, 672–692.
- Barndorff-Nielsen, Ole E., and Neil Shephard, 2004, Power and bipower variation with stochastic volatility and jumps (with discussion), *Journal of Financial Econometrics* 2, 1–48.
- Bjursell, Johan, George H. K. Wang, and Robert I. Webb, 2011, Jumps and trading

- activity in interest rate futures markets: The response to macroeconomic announcements, Working Paper, George Mason University and University of Virginia.
- Black, Keith H., 2006, Improving hedge fund risk exposures by hedging equity market volatility, *Journal of Trading* 1, 6–15.
- Bondarenko, Oleg, 2007, Variance trading and market price of variance risk, Working Paper, University of Illinois.
- Boyson, Nicole M., Christof W. Stahel, and René M. Stulz, 2010, Hedge fund contagion and liquidity shocks, *Journal of Finance* 65, 1789–1816.
- Broadie, Mark, Mikhail Chernov, and Michael Johannes, 2007, Model specification and risk premia: Evidence from futures options, *Journal of Finance* 62, 1453–1490.
- Brunnermeier, Markus K., and Lasse Heje Pedersen, 2009, Market liquidity and funding liquidity, *Review of Financial Studies* 22, 2201–2238.
- Carr, Peter, and Liuren Wu, 2003, What type of process underlies options? A simple robust test, *Journal of Finance* 58, 2581–2610.
- Dash, Srikant, and Matthew T. Moran, 2005, VIX as a companion for hedge fund portfolios, *Journal of Alternative Investments* 8, 75–80.
- Drummond, James, 2005, Hedge-fund managers lose sleep over “investor fear gauge.”

Financial Times, June 10.

Dudley, Evan, and Mahendrarajah Nimalendran, 2011, Margins and hedge fund

contagion, *Journal of Financial and Quantitative Analysis* 46, 1227-1257.

Egloff, Daniel, Markus Leippold, and Liuren Wu, 2010, The term structure of

variance swap rates and optimal variance swap investments, *Journal of*

Financial and Quantitative Analysis 45, 1279–1310.

Eraker, Bjørn, 2004, Do stock prices and volatility jump? Reconciling evidence from

spot and option prices, *Journal of Finance* 59, 1367–1403.

Eraker, Bjørn, Michael Johannes, and Nicholas Polson, 2003, The impact of jumps in

volatility and returns, *Journal of Finance* 53, 1269–1300.

Fama, Eugene F., and Kenneth R. French, 1993, Common risk factors in the returns

on stocks and bonds, *Journal of Financial Economics* 33, 3–56.

Fung, William, and David A. Hsieh, 2004, Hedge fund benchmarks: A risk based

approach, *Financial Analyst Journal* 60, 65–80.

Hafner, Reinhold, and Martin Wallmeier, 2008, Optimal investments in volatility,

Financial Markets and Portfolio Management 22, 147–167.

Huang, Xin, and George Tauchen, 2005, The relative contribution of jumps to total

price variance, *Journal of Financial Econometrics* 4, 456–499.

Jegadeesh, Narasimhan, and Sheridan Titman, 1993, Returns to buying winners and

- selling losers: Implications for stock market efficiency, *Journal of Finance* 48, 65–91.
- Jiang, George J., and Roel C.A. Oomen, 2008, Testing for jumps when asset prices are observed with noise – A “swap variance” approach, *Journal of Econometrics* 144, 352–370.
- Keating, Con, and Bill Shadwick, 2002, An introduction to omega, *AIMA Newsletter*.
- Lee, Suzanne S., and Jan Hannig, 2010, Detecting jumps from Lévy jump diffusion processes, *Journal of Financial Economics* 96, 271–290.
- Lee, Suzanne S., and Per Aslak Mykland, 2008, Jumps in financial markets: A new nonparametric test and jump dynamics, *Review of Financial Studies* 21, 2535–2563.
- Liang, Bing, and Hyuna Park, 2010, Predicting hedge fund failure: A comparison of risk measures, *Journal of Financial and Quantitative Analysis* 45, 199–222.
- Magdon-Ismail, Malik, and Amir F. Atiya, 2004, Maximum drawdown, *Risk* 17, 99–102.
- Magdon-Ismail, Malik, Amir F. Atiya, Amrit Pratap, and Yaser S. Abu-Mostafa, 2004, On the maximum drawdown of a Brownian motion, *Journal of Applied Probability* 41, 147–161.
- Mancini, Cecilia, 2001, Disentangling the jumps from the diffusion in a geometric

- jumping Brownian motion, *Giornale dell'Istituto Italiano degli Attuari* LXIV, 19–47.
- Pástor, Ľuboš, and Robert F. Stambaugh, 2003, Liquidity risk and expected stock returns, *Journal of Political Economy* 111, 642–685.
- Rockafellar, R. Tyrrell, and Stanislav Uryasev, 2002, Conditional value-at-risk for general loss distributions, *Journal of Banking and Finance* 26, 1443–1471.
- Todorov, Viktor, 2010, Variance risk premium dynamics: The role of jumps, *Review of Financial Studies* 23, 345–383.
- Tauchen, George, and Viktor Todorov, 2010, Activity signature functions for high-frequency data analysis, *Journal of Econometrics* 154, 125–138.
- Tauchen, George, and Viktor Todorov, 2011, Volatility jumps, *Journal of Business and Economic Statistics* 29, 356–371.
- Whaley, Robert E., 2000, The investor fear gauges, *Journal of Portfolio Management* 26, 12–17.

Table 1 Correlation of Hedge Fund Returns with Monthly Change in VIX across Quintiles of the S&P 500 Index

The monthly hedge fund returns are sorted into five groups based on the S&P 500 index (SPX). Quintile 1 (Q1) consists of the worst months, and Quintile 5 (Q5) the best months. Next, within each group, we further split funds into those that have positive change in VIX and those that have negative change in VIX. We report the correlation between monthly returns and monthly change in VIX (ΔVIX) of each sub-group. The sample is over the period October 2003 to July 2010.

Correlation	Q_1 (Low SPX)			Q_2			Q_3			Q_4			Q_5 (High SPX)		
	<i>All</i>	$\Delta VIX < 0$	$\Delta VIX > 0$	<i>All</i>	$\Delta VIX < 0$	$\Delta VIX > 0$	<i>All</i>	$\Delta VIX < 0$	$\Delta VIX > 0$	<i>All</i>	$\Delta VIX < 0$	$\Delta VIX > 0$	<i>All</i>	$\Delta VIX < 0$	$\Delta VIX > 0$
<i>Equal Weighted</i>	-0.5807	0.3204	-0.9327	-0.6012	-0.5892	-0.5373	-0.8843	-0.4675	-0.9040	-0.0872	-0.1022	-0.8205	-0.4675	-0.2352	-0.7002
<i>Global</i>	-0.6095	0.2272	-0.9412	-0.6517	-0.6133	-0.5762	-0.8848	-0.3877	-0.8954	-0.1636	-0.1275	-0.8144	-0.5457	-0.2523	-0.7073
<i>Relative Arbitrage</i>	-0.4541	0.2287	-0.9290	-0.5796	-0.4098	-0.7057	-0.8912	-0.0469	-0.9407	-0.0892	-0.1088	-0.3899	-0.2463	-0.3693	-0.2810
<i>Event Driven</i>	-0.5888	0.3122	-0.9389	-0.5096	-0.2841	-0.5875	-0.8801	-0.6444	-0.8942	-0.3916	0.0521	-0.8896	-0.5472	-0.1075	-0.4257
<i>Equity Hedge</i>	-0.6555	0.2774	-0.9664	-0.7218	-0.6303	-0.5833	-0.8832	-0.2162	-0.8864	-0.2791	-0.1248	-0.7430	-0.6179	-0.2232	-0.6385
<i>Risk Arbitrage</i>	-0.8216	-0.1394	-0.9764	-0.6287	-0.8320	-0.3663	-0.9070	-0.7995	-0.9215	-0.0811	0.0883	-0.7305	-0.3319	-0.2863	-0.3786
<i>Convertible Arbitrage</i>	-0.5393	0.4011	-0.9359	-0.3489	-0.2387	-0.8571	-0.8826	-0.0220	-0.9262	-0.0238	-0.0995	-0.4628	-0.3753	-0.4714	-0.5752
<i>Merger Arbitrage</i>	-0.6856	-0.4173	-0.7451	-0.5752	-0.4147	-0.2618	-0.6674	-0.7279	-0.6046	-0.2983	-0.2282	-0.5879	-0.4948	-0.1910	-0.7006
<i>Distressed Restructuring</i>	-0.1958	0.5504	-0.8740	-0.4478	-0.0869	-0.8037	-0.5794	-0.2319	-0.6906	0.2270	-0.0994	0.0481	-0.1303	0.5377	-0.7154
<i>Equity Market Neutral</i>	0.3193	0.0820	0.5060	0.1345	-0.4148	0.8329	-0.2230	-0.6808	-0.1809	0.0470	0.2318	-0.1018	-0.0823	0.1389	-0.2188
<i>Managed Futures</i>	0.1758	-0.1929	0.6499	-0.1643	-0.0744	-0.1521	-0.2674	-0.7756	0.1443	0.1132	-0.2054	-0.2390	-0.3556	-0.1731	-0.8493
<i>Macro/CTA</i>	-0.4081	-0.6162	-0.2824	-0.0770	-0.2671	0.0183	-0.3803	-0.3953	-0.3240	0.1425	-0.2439	-0.4671	-0.3416	-0.3272	-0.8312
<i>Trend Following</i>	0.3026	-0.3746	0.8372	-0.0798	-0.1331	-0.0274	-0.1029	-0.8761	0.3118	0.0855	-0.2816	-0.4023	-0.2760	-0.3395	-0.6015

Table 2 Summary Statistics for Market Status across Jump Activities on VIX

The table illustrates in-sample and out-of-sample market exposure of VIX, SPX and absolute percentage monthly change in VIX (denoted “ $|\Delta VIX/VIX|\%$ ”) to Brownian motion, small jumps and big jumps, respectively. The in-sample (out-of-sample) data period is from October (November) 2003 to June (July) 2010.

		Brownian Motion	Small Jumps	Big Jumps
Panel A. In-Sample Period: October 2003 – June 2010				
	N	18	3	60
VIX	M	14.3750	17.1833	22.5262
	Mdn	14.9200	14.9500	20.0750
	Maximum	17.5900	23.5200	59.8900
	Minimum	10.4200	13.0800	10.9100
	Stdev	2.1561	5.5668	11.2641
	Skewness	-0.4150	0.6184	1.4012
	Kurtosis	1.9100	1.5000	4.6556
	SPX	M	1,218.6722	1,334.0433
Mdn		1,157.1850	1,276.6600	1,205.3050
Maximum		1,503.3500	1,455.2700	1,549.3800
Minimum		1,050.7100	1,270.2000	735.0900
Stdev		146.0533	105.0350	193.4184
Skewness		0.8154	0.7041	-0.2519
Kurtosis		2.2740	1.5000	2.5363
$\left \frac{\Delta VIX}{VIX} \right \%$		M	10.6093	26.5505
	Mdn	9.6002	20.4380	9.1882
	Maximum	29.1373	44.9168	90.7506
	Minimum	0.1958	14.2966	0.0829
	Stdev	8.2415	16.1994	15.8050
	Skewness	0.7916	0.5945	2.4343
	Kurtosis	2.7660	1.5000	10.8531
	Panel B. Out-of-Sample Period: November 2003 – July 2010			
	N	18	3	60
VIX	M	15.3950	16.8800	22.3587
	Mdn	15.3050	14.9500	19.0150
	Maximum	23.5200	23.3800	59.8900
	Minimum	10.9100	12.3100	10.4200
	Stdev	3.4186	5.7819	11.3421
	Skewness	0.9255	0.5449	1.4044
	Kurtosis	3.3535	1.5000	4.6238
	SPX	M	1,225.6989	1,351.4900
Mdn		1,180.2550	1,303.8200	1,191.4150
Maximum		1,530.6200	1,473.9900	1,549.3800
Minimum		1,058.2000	1,276.6600	735.0900
Stdev		141.9511	106.9537	192.7143
Skewness		0.8139	0.6562	-0.2342
Kurtosis		2.3782	1.5000	2.5329
$\left \frac{\Delta VIX}{VIX} \right \%$		M	14.4216	10.8502
	Mdn	7.8559	14.2966	9.8131
	Maximum	47.9846	17.6589	90.7506
	Minimum	0.1958	0.5952	0.0829
	Stdev	15.5171	9.0388	14.7942
	Skewness	1.2142	-0.5986	2.7779
	Kurtosis	3.0866	1.5000	13.7279

Table 3 Out-of-Sample Hedge Fund Return and Risk across VIX Jump Activities

The table reports summary statistics for monthly hedge fund returns (%) and risk over the out-of-sample period, November 2003 to July 2010. Thirteen funds are sorted into three groups based on whether their previous months are dominated by Brownian motion, small jumps or big jumps. These are the three measures to gauge hedge fund performance when applied to a single hedge fund strategy: (i) using maximum drawdown (MaxDD) as a downside risk measure; (ii) using adjusted conditional Value-at-Risk (CVaR) at the confidence level 95% as a measure of extreme tail risk; and (iii) using extended Sharpe ratio (ESR) as a measure of the excess return relative to risk with highly non-normal distributions and large tails.

		Brownian Motion	Small Jumps	Big Jumps
	N	18	3	60
Equal Weighted	M	0.4055	-0.6544	0.0163
	Mdn	0.3284	-0.2566	0.4141
	Maximum	1.7548	0.5550	2.2767
	Minimum	-1.0853	-2.2615	-9.9303
	Stdev	0.8161	1.4498	1.9300
	MaxDD	0.0258	0.0282	0.1218
	CVaR(95%)	-0.0113	-0.0364	-0.0613
	ESR	0.2454	-0.6738	-0.0754
Global	M	0.4305	-0.7847	0.0417
	Mdn	0.3727	-0.5700	0.3545
	Maximum	2.5479	0.7630	3.1499
	Minimum	-1.3140	-2.5472	-9.3470
	Stdev	1.1532	1.6655	2.1287
	MaxDD	0.0348	0.0331	0.1216
	CVaR(95%)	-0.0170	-0.0407	-0.0630
	ESR	0.1962	-0.6812	-0.0603
Relative Value Arbitrage	M	0.5937	-0.4338	0.0121
	Mdn	0.5285	0.5107	0.3362
	Maximum	1.6514	0.8080	6.8138
	Minimum	-1.2280	-2.6202	-14.1105
	Stdev	0.7688	1.8993	3.1299
	MaxDD	0.0286	0.0343	0.1713
	CVaR(95%)	-0.0117	-0.0447	-0.0972
	ESR	0.4553	-0.3981	-0.0575
Event Driven	M	0.7250	-0.7334	0.1373
	Mdn	0.7581	-0.7298	0.8613
	Maximum	3.1533	0.5120	2.8059
	Minimum	-1.5361	-1.9824	-7.5259
	Stdev	1.2762	1.2472	2.1158
	MaxDD	0.0389	0.0249	0.1033
	CVaR(95%)	-0.0163	-0.0305	-0.0570
	ESR	0.4172	-0.9020	-0.0228
Equity Hedge	M	0.4331	-0.4720	-0.0386
	Mdn	0.4799	-1.0010	0.3760
	Maximum	3.0191	1.1620	4.4771
	Minimum	-2.5518	-1.5769	-9.9866
	Stdev	1.5589	1.4441	2.5866
	MaxDD	0.0511	0.0274	0.1289
	CVaR(95%)	-0.0280	-0.0258	-0.0729
	ESR	0.1369	-0.6676	-0.0789
Risk Arbitrage	M	0.4611	0.0533	0.4593
	Mdn	0.4250	0.3500	0.4950
	Maximum	3.0100	0.4600	3.2200
	Minimum	-1.5200	-0.6500	-3.4900

	Stdev	0.9357	0.6116	1.1078
	MaxDD	0.0311	0.0111	0.0671
	CVaR(95%)	-0.0123	-0.0124	-0.0257
	ESR	0.3226	-0.5218	0.2266
Convertible Arbitrage	M	0.3920	0.0891	-0.6834
	Mdn	0.5582	1.1387	0.0916
	Maximum	1.3483	1.2360	6.7348
	Minimum	-0.7301	-2.1074	-34.6830
	Stdev	0.6276	1.9028	5.5961
	MaxDD	0.0191	0.0334	0.3724
	CVaR(95%)	-0.0099	-0.0396	-0.1811
	ESR	0.2659	-0.1543	-0.1345
Merger Arbitrage	M	0.3118	0.7243	0.4566
	Mdn	0.4407	0.7380	0.6710
	Maximum	1.7571	0.9353	2.3222
	Minimum	-2.1360	0.4995	-2.8496
	Stdev	1.0174	0.2182	1.0299
	MaxDD	0.0389	0.0000	0.0447
	CVaR(95%)	-0.0213	0.0031	-0.0210
	ESR	0.0876	1.3724	0.2410
Distressed Restructuring	M	0.9030	-0.3025	-0.4600
	Mdn	0.9407	-0.4469	-0.0415
	Maximum	2.2845	0.3580	3.4942
	Minimum	-1.1339	-0.8186	-11.6879
	Stdev	0.9048	0.6014	2.5332
	MaxDD	0.0342	0.0118	0.1458
	CVaR(95%)	-0.0103	-0.0126	-0.0812
	ESR	0.7361	-1.2591	-0.2143
Equity Market Neutral	M	-0.0508	-1.0495	0.1206
	Mdn	-0.1628	-0.5410	0.1636
	Maximum	1.3167	-0.4385	2.4546
	Minimum	-1.4733	-2.1691	-2.7511
	Stdev	0.7448	0.9709	1.0461
	MaxDD	0.0228	0.0173	0.0521
	CVaR(95%)	-0.0144	-0.0311	-0.0224
	ESR	-0.3524	-1.3313	-0.0472
Managed Futures	M	-0.1561	-1.8833	0.7755
	Mdn	-0.3900	-2.4300	0.7850
	Maximum	5.8300	1.3900	6.8900
	Minimum	-6.4600	-4.6100	-5.3900
	Stdev	3.5139	3.0371	3.1326
	MaxDD	0.1188	0.0600	0.1228
	CVaR(95%)	-0.0674	-0.0692	-0.0527
	ESR	-0.1031	-0.7826	0.1890
Macro/CTA	M	-0.2037	-2.8963	0.4069
	Mdn	-0.3553	-1.3753	0.1441
	Maximum	3.7774	0.0650	8.5356
	Minimum	-3.6818	-7.3786	-5.5904
	Stdev	2.2072	3.9480	2.4922
	MaxDD	0.0691	0.0744	0.1413
	CVaR(95%)	-0.0445	-0.1119	-0.0412
	ESR	-0.1850	-0.7570	0.1095
Trend Following	M	0.2878	-3.1267	1.4263
	Mdn	0.1700	-4.5500	0.9950
	Maximum	7.8200	0.3300	12.7800
	Minimum	-7.2500	-5.1600	-7.2500

Stdev	3.7781	3.0091	4.0046
MaxDD	0.1458	0.0549	0.2003
CVaR(95%)	-0.0673	-0.0730	-0.0542
ESR	0.0268	-1.3041	0.3627

Table 4 Out-of-Sample Risk-Adjusted Alphas Respective of VIX Jump Activities

This table shows the result that hedge fund excess returns regress against seven risk factors and three dummy variables:

$$r_{i,t} = \alpha_{i,con}D_{con,t-1} + \alpha_{i,sj}D_{sj,t-1} + \alpha_{i,bj}D_{bj,t-1} + \beta_{i,1}SNPMRF_t + \beta_{i,2}SCMLC_t + \beta_{i,3}BD10RET_t + \beta_{i,4}BAAMTSY_t + \beta_{i,5}PTFSBD_t + \beta_{i,6}PTFSFX_t + \beta_{i,7}PTFSCOM_t + \varepsilon_{i,t}$$

where $r_{i,t}$ is the return on fund i in excess of the one-month Treasury bill return (the risk-free rate) in month t . $D_{bj,t-1}$ equals 1 if month $t-1$ is dominated by large jumps, and 0 otherwise. $D_{con,t-1}$ equals 1 if month $t-1$ is dominated by Brownian motion, and 0 otherwise. $D_{sj,t-1}$ equals 1 if month $t-1$ is dominated by small jumps, and 0 otherwise. The Fung and Hsieh (2004) model proposes seven risk factors to evaluate hedge fund performance: the S&P 500 return minus the risk-free rate, $SNPMRF$; the Russell 2000 minus S&P 500 monthly total return, $SCMLC$; the monthly change in the 10-year Treasury constant maturity yield, $BD10RET$; monthly changes in the credit spread defined as Moody's Baa bond yield minus the 10-year Treasury bond yield, $BAAMTSY$; and excess returns on portfolios of lookback straddles on bonds ($PTFSBD$), currencies ($PTFSFX$) and commodities ($PTFSCOM$). ***, (**, *) indicates that the t statistics after the Newey-West correction of standard errors for heteroscedasticity and autocorrelation are significance in the 99% (95%, 90%) confidence interval. $R(\%)$ under the headings $D_{con,t-1}$, $D_{sj,t-1}$ and $D_{bj,t-1}$ represents the out-of-sample average monthly fund return (%) following the months dominated by Brownian motion, small jumps and big jumps, respectively. The groups are also further split into the scenarios $\Delta VIX < 0$ and $\Delta VIX > 0$. The out-of-sample period is from November 2003 to July 2010.

		$D_{con,t-1}$	$D_{sj,t-1}$	$D_{bj,t-1}$	$SNPMRF$	$SCMLC$	$BD10RET$	$BAAMTSY$	$PTFSBD$	$PTFSFX$	$PTFSCOM$		
13 Hedge Funds	ALL	Param	0.4243*	-1.0651**	0.6553***	0.2091***	-0.0046	0.3422	-0.2207***	-0.0017	-0.0061	0.0061	
		p-value	0.0703	0.0129	0.0061	<.0001	0.8824	0.2591	0.0035	0.8304	0.1740	0.2866	
		R(%)	0.3487	-0.8823	0.2054								
	$\Delta VIX < 0$	Param	0.7307***	-1.2363**	0.9842***	0.1817***	-0.0960***	0.3551	-0.2353***	0.0024	-0.0025	-0.0078	
		p-value	0.0031	0.0491	0.0002	<.0001	0.0084	0.3253	0.0071	0.7835	0.6303	0.2092	
		R(%)	0.4957	-0.7069	0.5705								
	$\Delta VIX > 0$	Param	0.4965	-1.9077***	0.0781	0.1978***	0.1678**	-1.0055	-0.1348	-0.0074	-0.0117	0.0372***	
		p-value	0.2990	0.0035	0.8619	<.0001	0.0106	0.1211	0.3228	0.6733	0.1541	0.0047	
		R(%)	0.0546	-0.9700	-0.2408								
	Equal Weighted	ALL	Param	0.5582	-0.8850	0.6187	0.2296***	-0.0137	0.5798	-0.2708**	-0.0027	-0.0174**	-0.0034
			p-value	0.1585	0.2202	0.1256	<.0001	0.7941	0.2565	0.0353	0.8450	0.0227	0.7181
			R(%)	0.4055	-0.6544	0.0163							
$\Delta VIX < 0$		Param	0.4744	-1.2895	0.4540	0.1992***	-0.1102*	0.7149	-0.1273	-0.0078	-0.0070	-0.0116	
		p-value	0.2506	0.2204	0.3016	<.0001	0.0742	0.2373	0.3816	0.5858	0.4150	0.2660	
		R(%)	0.5349	-0.2566	0.4059								

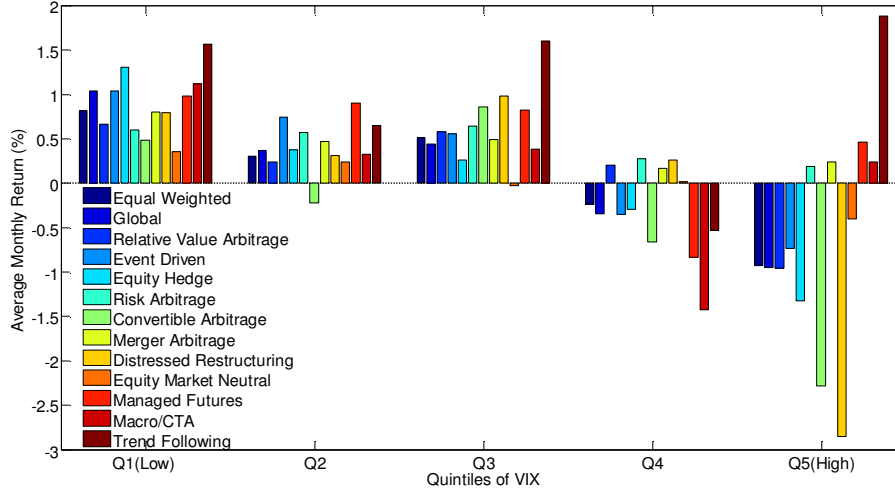
	$\Delta VIX > 0$	Param	1.1390	-1.2780	0.6238	0.2148***	0.1478	-0.5107	-0.3550	0.0036	-0.0294**	0.0170
		p-value	0.1320	0.2106	0.3727	0.0004	0.1526	0.6111	0.1012	0.8949	0.0278	0.4056
		R(%)	0.1467	-0.8533	-0.4599							
<i>Global</i>	ALL	Param	0.3825	-1.1529	0.4377	0.2828***	-0.0151	0.6938	-0.2039	-0.0073	-0.0151*	0.0027
		p-value	0.3781	0.1478	0.3227	<.0001	0.7937	0.2179	0.1468	0.6304	0.0706	0.7939
		R(%)	0.4305	-0.7847	0.0417							
	$\Delta VIX < 0$	Param	0.5049	-1.5280	0.4301	0.2710***	-0.1025	0.7570	-0.1157	-0.0062	-0.0070	-0.0096
		p-value	0.2983	0.2177	0.4047	<.0001	0.1549	0.2871	0.4986	0.7137	0.4873	0.4294
		R(%)	0.6469	-0.5700	0.4521							
	$\Delta VIX > 0$	Param	0.6182	-1.6642	0.2700	0.2526***	0.1250	-0.6126	-0.2500	-0.0133	-0.0254*	0.0314
		p-value	0.4452	0.1372	0.7214	0.0002	0.2633	0.5759	0.2820	0.6545	0.0765	0.1636
		R(%)	-0.0024	-0.8921	-0.4598							
<i>Relative Value</i>	ALL	Param	0.3753	-1.1660	0.3762	0.3438***	-0.1222	1.5546*	-0.2154	-0.0309	-0.0233*	-0.0144
		p-value	0.5618	0.3249	0.5683	<.0001	0.1588	0.0662	0.3028	0.1727	0.0611	0.3590
		R(%)	0.5937	-0.4338	0.0121							
	$\Delta VIX < 0$	Param	-0.6002	-2.6348	-0.8297	0.3774***	-0.2793***	1.3258	0.4225*	-0.0347	-0.0080	-0.0160
		p-value	0.3865	0.1393	0.2632	<.0001	0.0089	0.1944	0.0897	0.1528	0.5791	0.3596
		R(%)	0.6679	0.5107	0.7883							
	$\Delta VIX > 0$	Param	1.6242	-0.6848	1.1192	0.2258***	-0.0163	-0.2893	-0.7966**	-0.0547	-0.0349*	-0.0208
		p-value	0.1367	0.6378	0.2702	0.0064	0.9115	0.8416	0.0139	0.1713	0.0666	0.4798
		R(%)	0.4452	-0.9061	-0.9366							
<i>Event Driven</i>	ALL	Param	0.3609	-1.3808*	0.1152	0.2871***	0.0110	0.9128*	-0.0611	-0.0113	-0.0109	-0.0072
		p-value	0.3896	0.0741	0.7870	<.0001	0.8434	0.0951	0.6504	0.4373	0.1746	0.4783
		R(%)	0.7250	-0.7334	0.1373							
	$\Delta VIX < 0$	Param	0.5234	-2.0333	0.3709	0.3251***	-0.0842	0.5614	-0.0986	-0.0151	-0.0049	-0.0187
		p-value	0.3133	0.1273	0.5010	<.0001	0.2719	0.4586	0.5895	0.4024	0.6467	0.1562
		R(%)	0.8164	-0.7298	0.4992							
	$\Delta VIX > 0$	Param	0.7356	-1.8320*	-0.2905	0.2227***	0.2169**	0.1211	0.0270	-0.0081	-0.0247**	0.0238
		p-value	0.2816	0.0547	0.6476	<.0001	0.0259	0.8947	0.8886	0.7444	0.0419	0.2070
		R(%)	0.5421	-0.7352	-0.3051							
<i>Equity Hedge</i>	ALL	Param	0.1953	-1.0539	0.1620	0.3887***	-0.0042	0.5527	-0.1266	-0.0036	-0.0147	0.0061
		p-value	0.6979	0.2534	0.7519	<.0001	0.9505	0.3968	0.4354	0.8383	0.1270	0.6179
		R(%)	0.4331	-0.4720	-0.0386							

$\Delta VIX < 0$	Param	0.7871	-1.2939	0.5298	0.3646***	-0.0375	1.0379	-0.2545	-0.0011	-0.0061	-0.0072
	p-value	0.2239	0.4293	0.4397	<.0001	0.6920	0.2724	0.2656	0.9600	0.6464	0.6544
	R(%)	0.7767	-1.0010	0.2509							
$\Delta VIX > 0$	Param	-0.2434	-1.6222	-0.2823	0.3878***	0.0776	-0.4980	0.0140	-0.0122	-0.0256*	0.0398*
	p-value	0.7678	0.1561	0.7157	<.0001	0.4938	0.6563	0.9526	0.6882	0.0809	0.0877
	R(%)	-0.2541	-0.2075	-0.3924							
<i>Risk Arbitrage</i>	Param	-0.1413	-1.0145*	-0.0946	0.1542***	-0.0205	-0.5899	0.1187	-0.0114	0.0024	-0.0044
	p-value	0.6200	0.0543	0.7444	<.0001	0.5897	0.1126	0.1984	0.2512	0.6593	0.5251
	R(%)	0.4611	0.0533	0.4593							
$\Delta VIX < 0$	Param	0.0463	-0.9814	0.1570	0.1617***	-0.0739	-1.1849**	0.0756	-0.0094	0.0070	-0.0137
	p-value	0.9051	0.3236	0.7046	<.0001	0.2018	0.0428	0.5828	0.4860	0.3879	0.1655
	R(%)	0.4792	0.4600	0.5461							
$\Delta VIX > 0$	Param	-0.1989	-1.4971***	-0.4993	0.1373***	0.0770	-0.3151	0.2641**	-0.0095	-0.0072	0.0072
	p-value	0.6091	0.0083	0.1786	<.0001	0.1557	0.5505	0.0235	0.5068	0.2860	0.4991
	R(%)	0.4250	-0.1500	0.3533							
<i>Convertible Arbitrage</i>	Param	1.2375	-0.1561	1.2144	0.5035***	-0.0536	1.3651	-0.6994*	0.0013	-0.0738***	-0.0395
	p-value	0.3046	0.9433	0.3228	<.0001	0.7377	0.3811	0.0740	0.9749	0.0018	0.1780
	R(%)	0.3920	0.0891	-0.6835							
$\Delta VIX < 0$	Param	-0.4537	-2.7324	-0.7195	0.3800***	-0.3477**	1.5184	0.2668	-0.0343	-0.0277	-0.0384
	p-value	0.6805	0.3325	0.5408	0.0007	0.0377	0.3490	0.4946	0.3718	0.2323	0.1717
	R(%)	0.4792	1.1387	0.4383							
$\Delta VIX > 0$	Param	4.1419*	0.5923	2.5575	0.4813***	0.2726	0.1355	-1.3874**	0.0394	-0.1157***	-0.0616
	p-value	0.0739	0.8461	0.2317	0.0057	0.3787	0.9645	0.0380	0.6333	0.0057	0.3220
	R(%)	0.2177	-0.4357	-2.0544							
<i>Merger Arbitrage</i>	Param	-0.1515	0.0458	-0.0124	0.0996***	0.0820**	-0.3244	0.1120	0.0059	-0.0043	0.0028
	p-value	0.6129	0.9333	0.9675	0.0001	0.0428	0.4034	0.2476	0.5698	0.4571	0.6967
	R(%)	0.3118	0.7243	0.4566							
$\Delta VIX < 0$	Param	0.2104	-0.1140	0.3527	0.1061***	0.0039	-0.6514	0.0283	0.0068	-0.0012	-0.0068
	p-value	0.5676	0.9029	0.3705	0.0035	0.9424	0.2305	0.8278	0.5949	0.8715	0.4631
	R(%)	0.5121	0.4995	0.5833							
$\Delta VIX > 0$	Param	-0.3252	-0.5420	-0.5583	0.0818	0.2258***	-0.5293	0.2875**	0.0092	-0.0111	0.0206
	p-value	0.4950	0.4041	0.2173	0.0227	0.0017	0.4136	0.0417	0.5985	0.1813	0.1223
	R(%)	-0.0889	0.8367	0.3018							

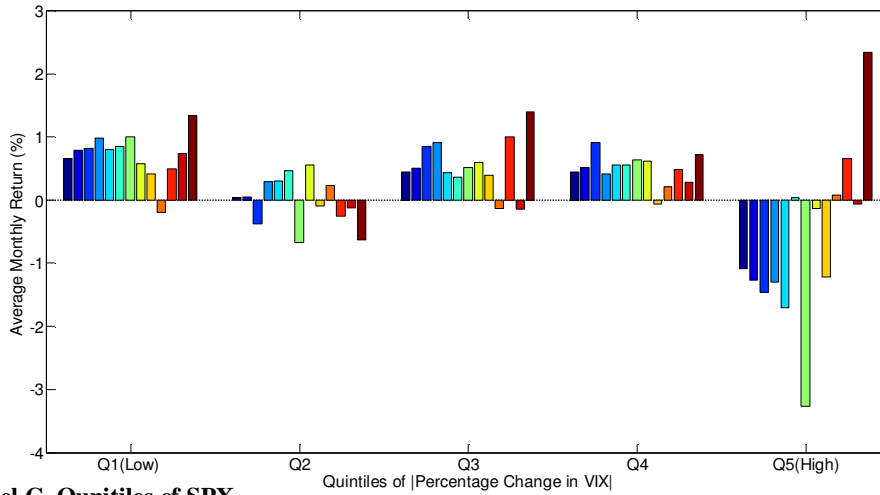
<i>Distressed Restructuring</i>	<i>ALL</i>	<i>Param</i>	2.2847***	0.8356	1.9469***	0.1385***	0.0433	1.2284*	-0.9688***	-0.0248	-0.0127	-0.0046	
		<i>p-value</i>	<.0001	0.3531	0.0002	0.0010	0.5089	0.0564	<.0001	0.1496	0.1758	0.7019	
		<i>R(%)</i>	0.9030	-0.3025	-0.4600								
	$\Delta VIX < 0$	<i>Param</i>	2.3610***	0.4105	2.2827***	0.0072	0.0441	2.1798***	-1.0635***	-0.0528***	0.0098		-0.0099
		<i>p-value</i>	<.0001	0.7549	0.0002	0.8806	0.5636	0.0063	<.0001	0.0054	0.3650	0.4498	
		<i>R(%)</i>	0.9187	-0.4469	-0.0140								
	$\Delta VIX > 0$	<i>Param</i>	2.9765***	0.6271	1.7546**	0.2290***	0.1539	0.5241	-0.8814***	0.0164	-0.0322**		0.0162
		<i>p-value</i>	0.0009	0.5637	0.0258	0.0004	0.1664	0.6280	0.0006	0.5770	0.0258	0.4597	
		<i>R(%)</i>	0.8716	-0.2303	-1.0050								
<i>Equity Market Neutral</i>	<i>ALL</i>	<i>Param</i>	0.4146	-0.7701	0.7904**	-0.0128	-0.0342	0.4776	-0.2664**	0.0178	0.0023	-0.0092	
		<i>p-value</i>	0.1892	0.1820	0.0155	0.6202	0.4145	0.2420	0.0101	0.1057	0.7020	0.2307	
		<i>R(%)</i>	-0.0508	-1.0495	0.1206								
	$\Delta VIX < 0$	<i>Param</i>	0.5724	-0.5153	0.3642	-0.0157	-0.0932*	1.3492**	-0.2341*	0.0092	-0.0045		-0.0016
		<i>p-value</i>	0.1060	0.5611	0.3289	0.6285	0.0755	0.0113	0.0633	0.4481	0.5374	0.8540	
		<i>R(%)</i>	0.1323	-0.4385	-0.1225								
	$\Delta VIX > 0$	<i>Param</i>	0.5578	-0.7491	1.5831***	0.0160	0.0744	0.1784	-0.3752***	0.0548***	0.0087		0.0019
		<i>p-value</i>	0.2125	0.2181	0.0007	0.6126	0.2247	0.7653	0.0058	0.0022	0.2593	0.8764	
		<i>R(%)</i>	-0.4172	-1.3551	0.4176								
<i>Managed Futures</i>	<i>ALL</i>	<i>Param</i>	0.0196	-1.5921	1.0607	0.1292	0.0824	-0.6531	-0.1376	0.0266	0.0334*	0.0230	
		<i>p-value</i>	0.9852	0.4087	0.3243	0.1384	0.5575	0.6318	0.6850	0.4680	0.0992	0.3694	
		<i>R(%)</i>	-0.1561	-1.8833	0.7755								
	$\Delta VIX < 0$	<i>Param</i>	2.1302*	-0.6979	3.7258***	0.0611	0.0119	-1.1457	-0.8824**	0.0638	0.0142		-0.0214
		<i>p-value</i>	0.0797	0.8177	0.0054	0.5824	0.9461	0.5119	0.0418	0.1285	0.5676	0.4775	
		<i>R(%)</i>	0.1183	-2.4300	1.1118								
	$\Delta VIX > 0$	<i>Param</i>	-2.0518	-4.5780*	-2.1690	0.1798	0.3274	-2.9971	0.7548	-0.0141	0.0498*		0.1090**
		<i>p-value</i>	0.2331	0.0559	0.1814	0.1481	0.1671	0.1999	0.1275	0.8217	0.0972	0.0261	
		<i>R(%)</i>	-0.7050	-1.6100	0.3644								
<i>Macro/CTA</i>	<i>ALL</i>	<i>Param</i>	0.0195	-2.7045*	0.8664	0.0859	-0.0002	-0.3819	-0.2134	0.0105	-0.0021	0.0408**	
		<i>p-value</i>	0.9810	0.0737	0.3008	0.2041	0.9986	0.7185	0.4196	0.7120	0.8910	0.0426	
		<i>R(%)</i>	-0.2037	-2.8963	0.4069								
	$\Delta VIX < 0$	<i>Param</i>	0.8919	-0.8456	1.6781*	0.0264	-0.0983	-0.6467	-0.3291	0.0437	-0.0111		0.0097
		<i>p-value</i>	0.3169	0.7077	0.0817	0.7492	0.4530	0.6184	0.2970	0.1606	0.5475	0.6650	
		<i>R(%)</i>	0.0875	-1.3753	0.6866								

	ΔVIX	<i>Param</i>	-0.5364	-5.2169**	-0.2997	0.0989	0.2145	-2.6723	0.0168	-0.0205	0.0008	0.1097**
	> 0	<i>p-value</i>	0.7198	0.0156	0.8309	0.3599	0.2997	0.1944	0.9685	0.7094	0.9766	0.0121
		<i>R(%)</i>	-0.7862	-3.6568	0.0650							
<i>Trend Following</i>	<i>ALL</i>	<i>Param</i>	-0.0397	-2.8522	1.0376	0.0881	-0.0151	-0.9668	0.0637	0.0070	0.0575**	0.0859**
		<i>p-value</i>	0.9726	0.1788	0.3789	0.3542	0.9221	0.5179	0.8640	0.8614	0.0106	0.0029
		<i>R(%)</i>	0.2878	-3.1267	1.4263							
	ΔVIX	<i>Param</i>	2.0512*	-1.8155	3.9987***	0.0979	-0.0812	-1.1999	-0.7472*	0.0683*	0.0144	0.0438
	< 0	<i>p-value</i>	0.0759	0.5291	0.0020	0.3558	0.6265	0.4701	0.0680	0.0881	0.5426	0.1300
		<i>R(%)</i>	0.2742	-4.5500	1.7912							
	ΔVIX	<i>Param</i>	-1.9831	-6.3559**	-2.7936	0.0435	0.2852	-5.6065**	0.9290	-0.0874	0.0942**	0.1900***
	> 0	<i>p-value</i>	0.3221	0.0252	0.1425	0.7599	0.2991	0.0454	0.1095	0.2371	0.0101	0.0016
		<i>R(%)</i>	0.3150	-2.4150	0.9804							

Panel A. Quintiles of VIX



Panel B. Quintiles of absolute percentage change in VIX



Panel C. Quintiles of SPX

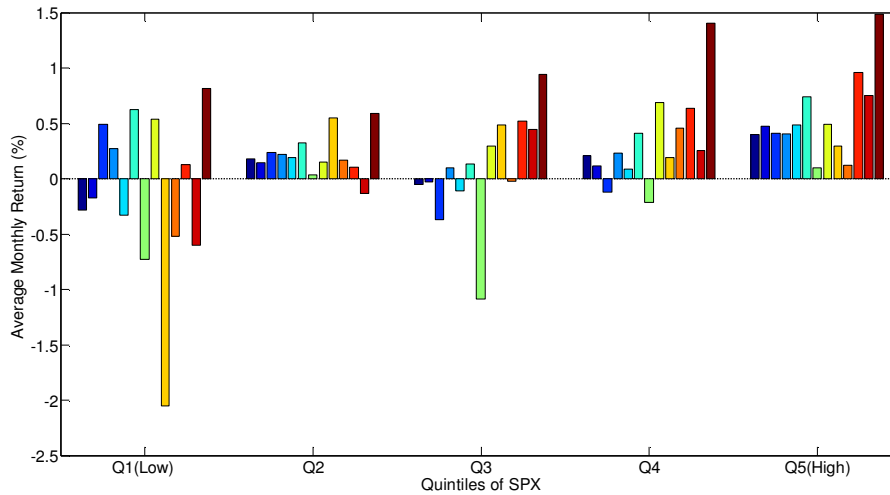
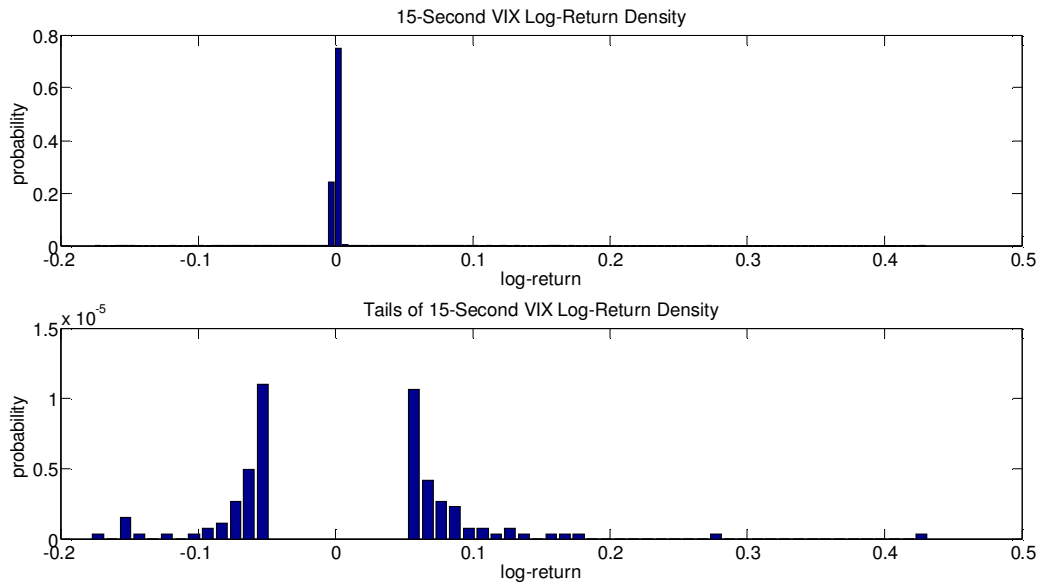


Figure 1. Hedge fund monthly returns across five quintiles of VIX, absolute percentage change in VIX and SPX. Quintile 1 (Q1) consists of the months with the smallest VIX in Panel A, absolute percentage change in VIX ($|Percentage\ Change\ in\ VIX|$) in Panel B, and S&P 500 Index (SPX) in Panel C. Quintile 5 (Q5) indicates the months with the largest VIX, absolute percentage change in VIX, and SPX, respectively. The sample period is October 2003 to July 2010.

Panel A. VIX log difference (“Log-Return”) densities sampled at the 15 second frequency



Panel B. VIX log difference (“Log-Return”) densities sampled at the daily frequency

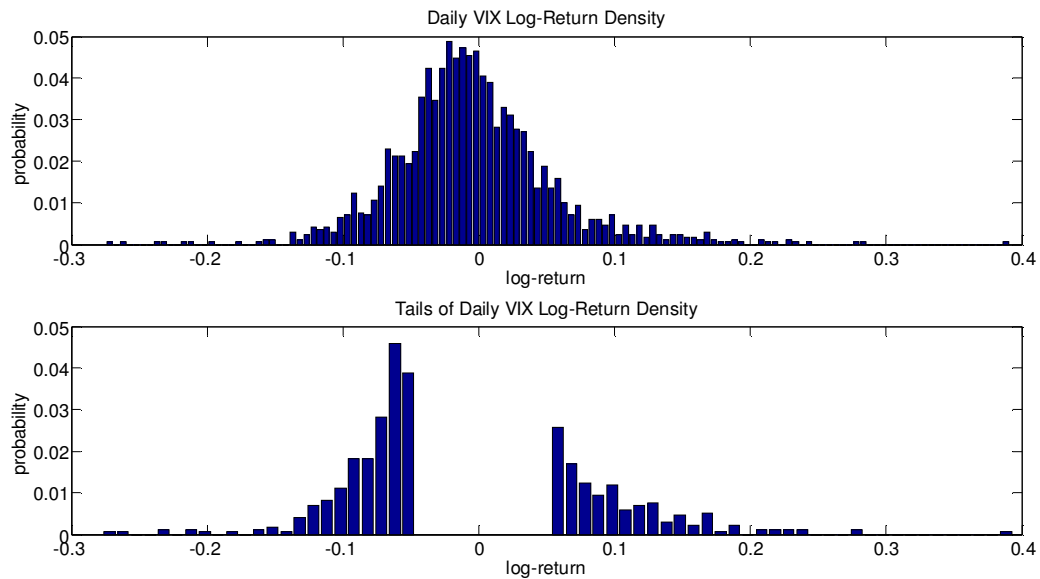
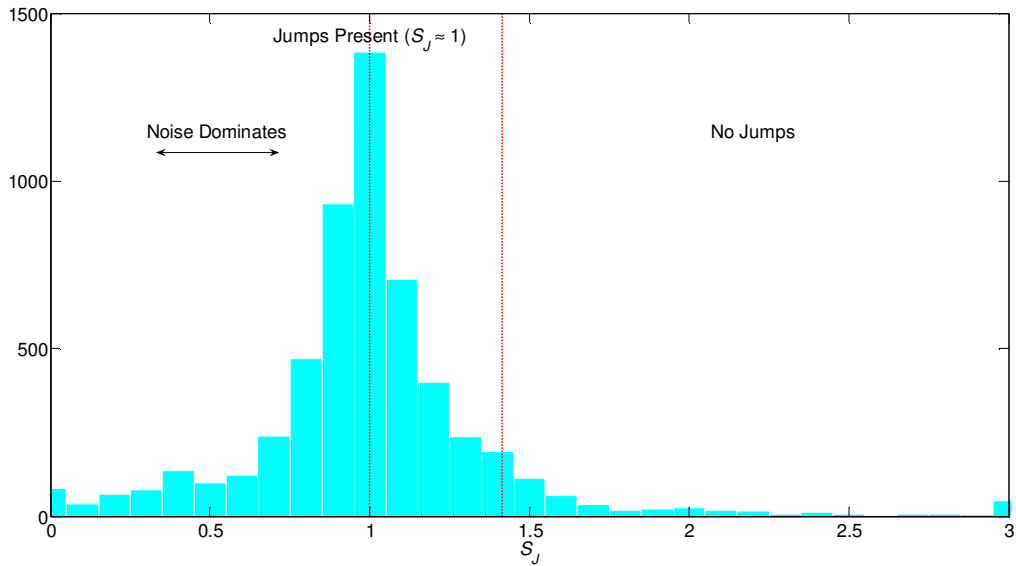


Figure 2. VIX log difference densities over the period from October 1, 2003 to June 30, 2010. Overnight log-returns are excluded from the sample. Panel A displays the VIX log difference density and its tails sampled at the 15 second frequency. Panel B presents the VIX log difference density and its tails sampled at the daily frequency. Tails of log-returns R are given by $|R| \geq 0.05$. Simple visual inspection of the tails of both log difference distributions suggests the presence of jumps and right-skewed. Excess skewness and kurtosis for 15-second log differences are, however, significantly larger than those for daily log differences, as indicative of more small jumps activity in ultra-high frequency VIX data.

Panel A. Empirical distribution of S_J for VIX



Panel B. Average value of S_J as a function of the sampling interval for VIX

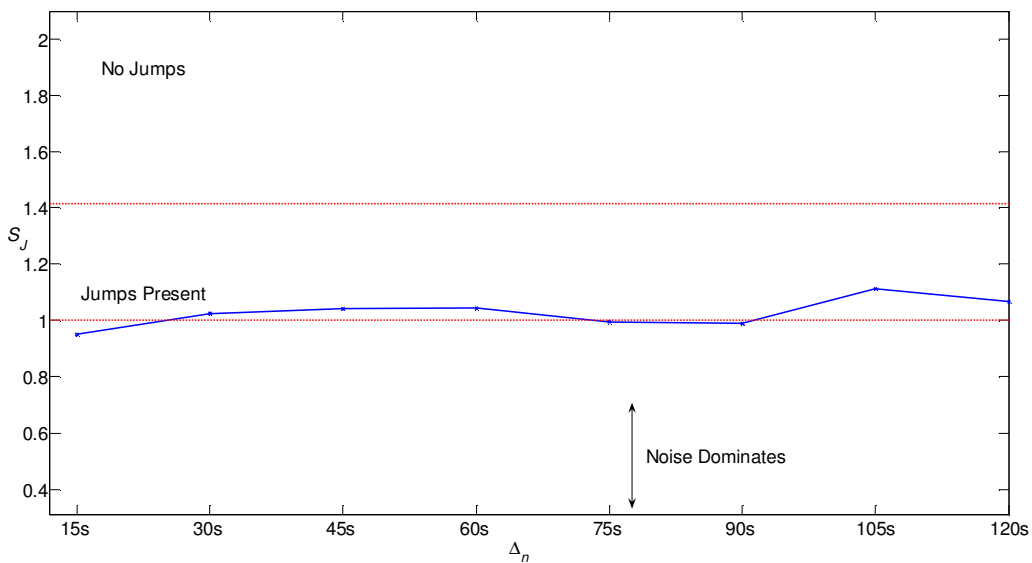
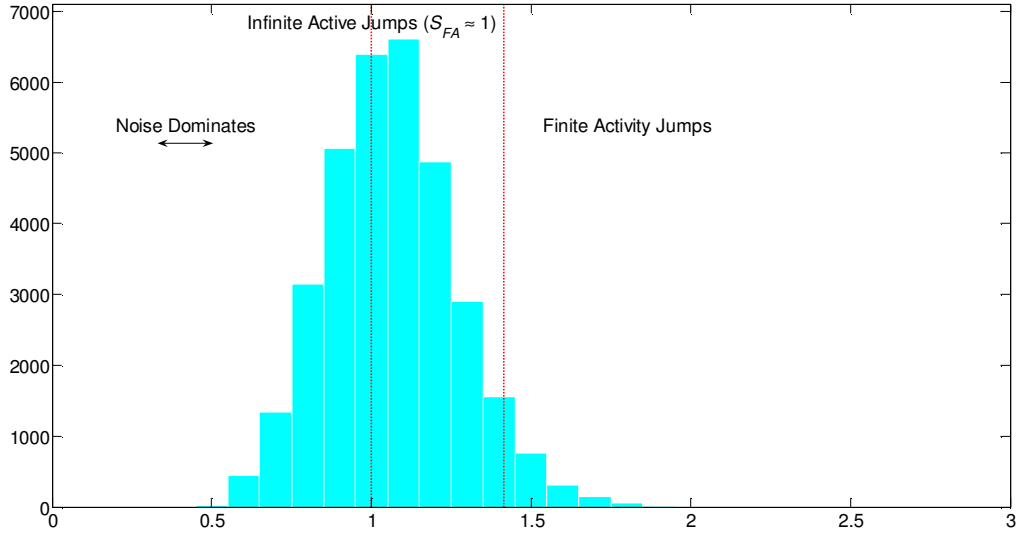


Figure 3. Test statistic of S_J for VIX from Q4 2003 to Q2 2010. Test statistic S_J is to test for the presence of jumps. Panel A displays empirical distribution of S_J for VIX, whereas Panel B shows average value of S_J as a function of the sampling interval for VIX. The value of S_J is calculated for a range of values of p from 3 to 6, Δ_n from 15 seconds to 2 minutes, and $k = 2, 3$. The values of S_J between $\min(1/k) = 0.3333$ and $\max(1/\sqrt{k}) = 0.7071$ are indicative of noise dominating, the values around 1 indicate the presence of jumps, and the values approach $k^{p/2-1} \in [1.4142, 9]$ if no jumps exist.

Panel A. Empirical distribution of S_{FA} for VIX



Panel B. Average value of S_{FA} as a function of the sampling interval for VIX

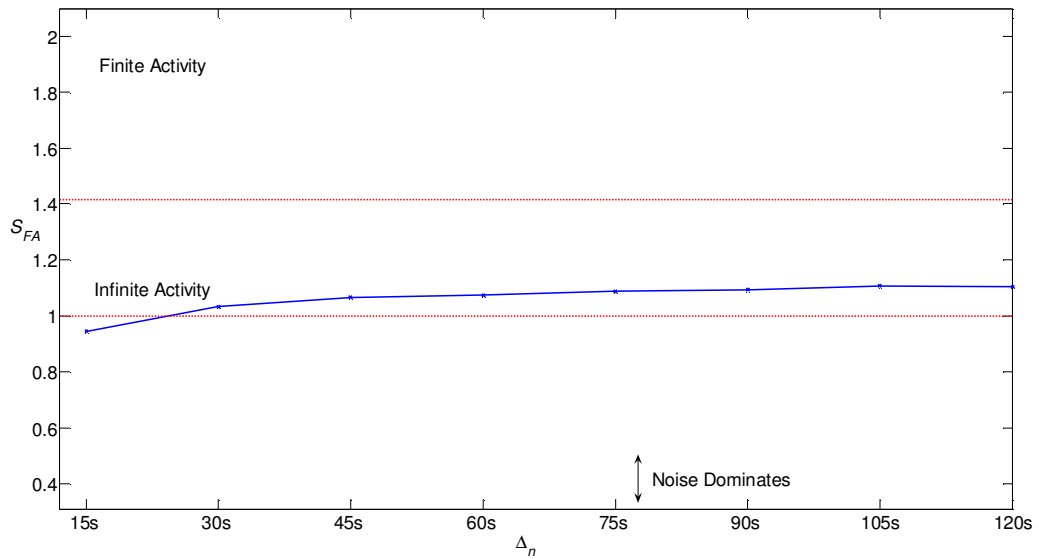


Figure 4. Test statistic of S_{FA} for VIX from Q4 2003 to Q2 2010. Test statistic S_{FA} is to test whether jumps have finite or infinite activity. Panel A displays empirical distribution of S_{FA} for VIX, whereas Panel B shows average value of S_{FA} as a function of the sampling interval for VIX. The value of S_{FA} is calculated for a range of values of p from 3 to 6, η from 5 to 10 standard deviations, Δ_n from 15 seconds to 2 minutes, and $k = 2, 3$. The values of S_{FA} between $\min(1/k) = 0.3333$ and $\max(1/k) = 0.5$ are indicative of noise dominating, the values around 1 indicate infinite activity, and the values approach $k^{p/2-1} \in [1.4142, 9]$ if finite activity exists.

Panel A. Empirical distribution of S_{IA} for VIX

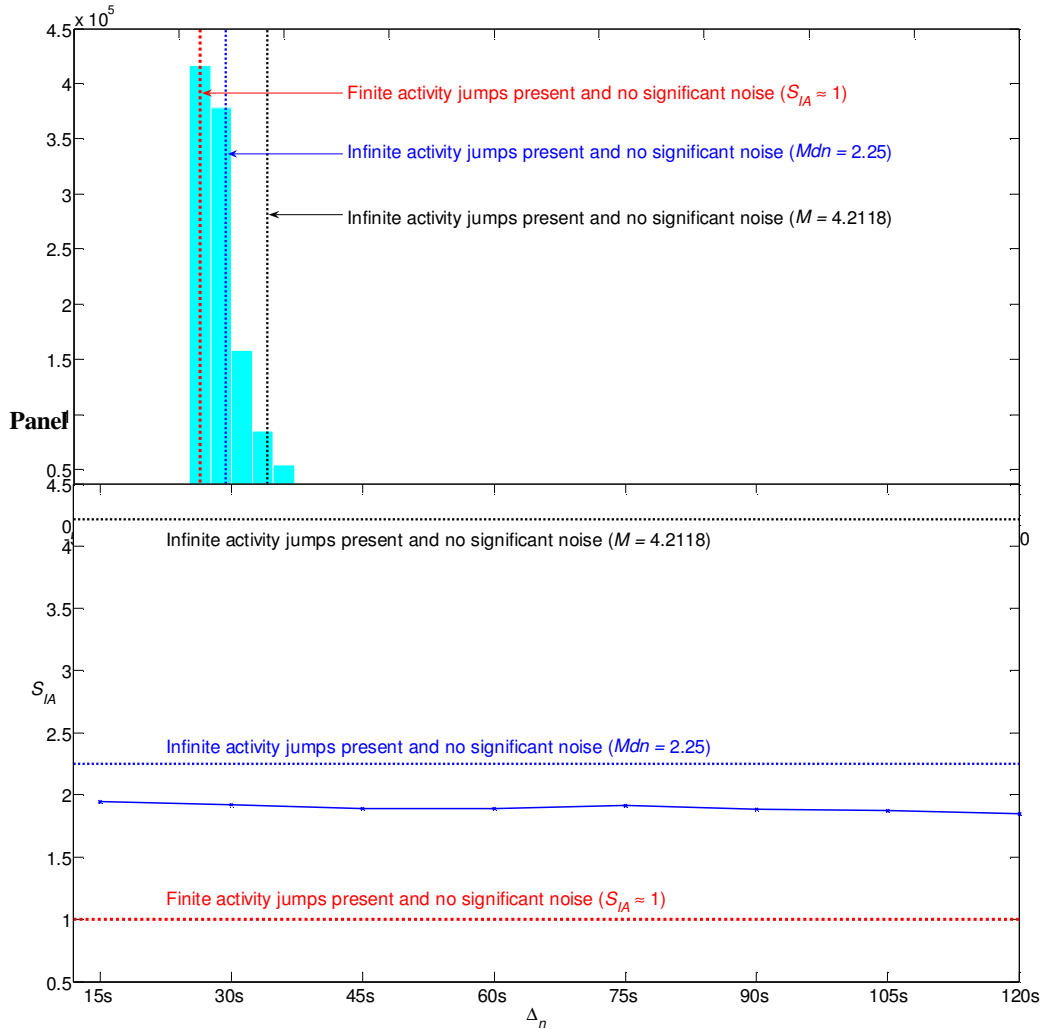
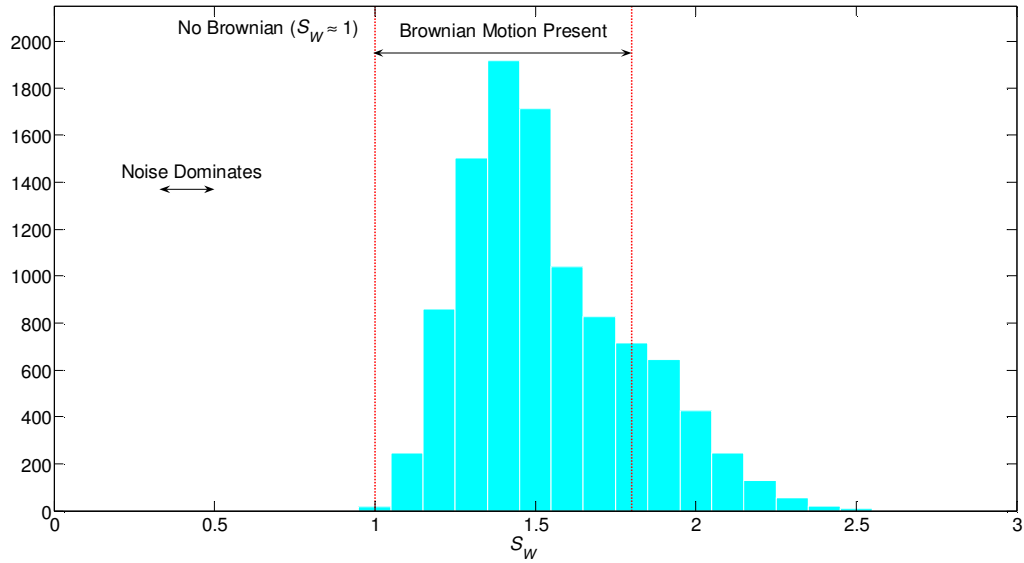


Figure 5. Test statistic of S_{IA} for VIX from Q4 2003 to Q2 2010. Test statistic S_{IA} is to test the null being infinite activity jumps present and no significant noise, and the alternative of finite activity jumps present and no significant noise, by choosing $\gamma > 1$ and $p' > p > 2$. Panel A displays empirical distribution of S_{IA} for VIX, whereas Panel B shows average value of S_{IA} as a function of the sampling interval for VIX. The value of S_{IA} around $\gamma^{p'-p}$ is indicative of infinite jump activity, and the value around 1 indicates jumps have finite activity.

Panel A. Empirical distribution of S_W for VIX



Panel B. Average value of S_W as a function of the sampling interval for VIX

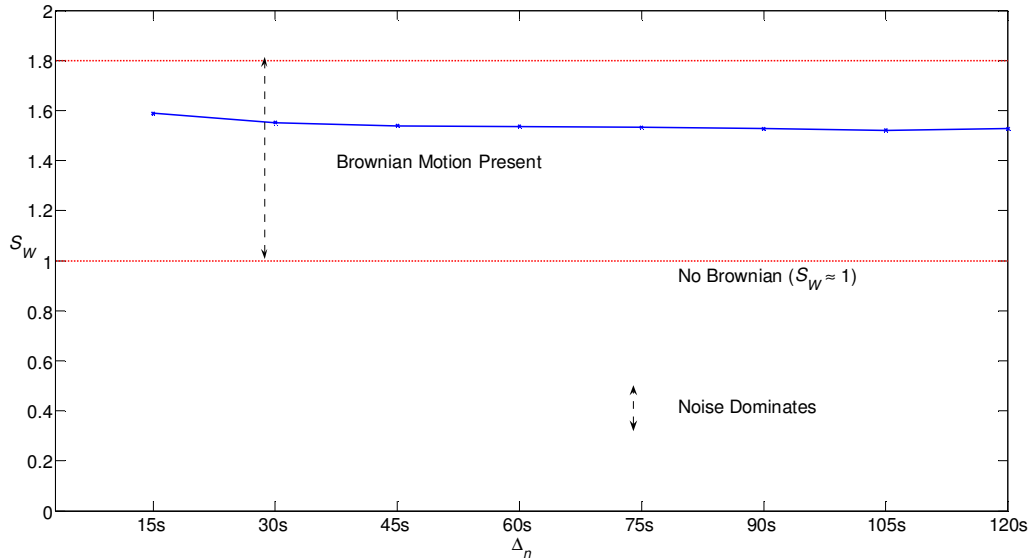
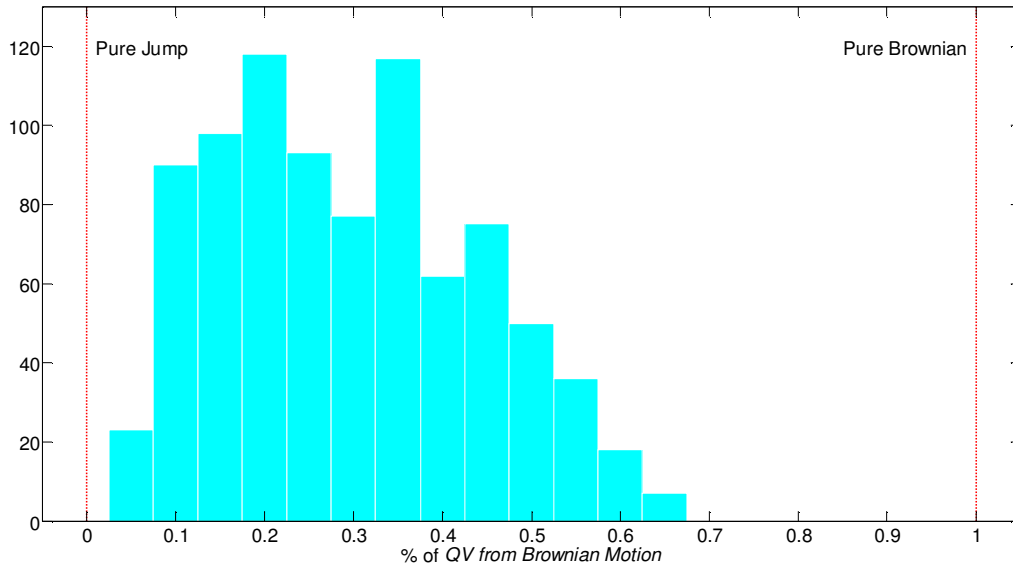


Figure 6. Test statistic of S_W for VIX from Q4 2003 to Q2 2010. Test statistic S_W is to test whether Brownian motion is present. Panel A displays empirical distribution of S_W for VIX, whereas Panel B shows average value of S_W as a function of the sampling interval for VIX. The value of S_W is calculated for a range of values of p from 1 to 1.75, η from 5 to 10 standard deviations, Δ_n from 15 seconds to 2 minutes, and $k=2, 3$. The values of S_W between $\min(k^{1-p/2})=1.0905$ and $\max(k^{1-p/2})=1.7321$ are indicative of the presence of Brownian motion, the values around 1 indicate no Brownian motion, and the values between $\min(1/k)=0.3333$ and $\max(1/k)=0.5$ indicate noise dominating.

Panel A. Empirical distribution of fraction of QV attributable to Brownian component for VIX



Panel B. Average fraction of QV attributable to Brownian component as a function of the sampling interval

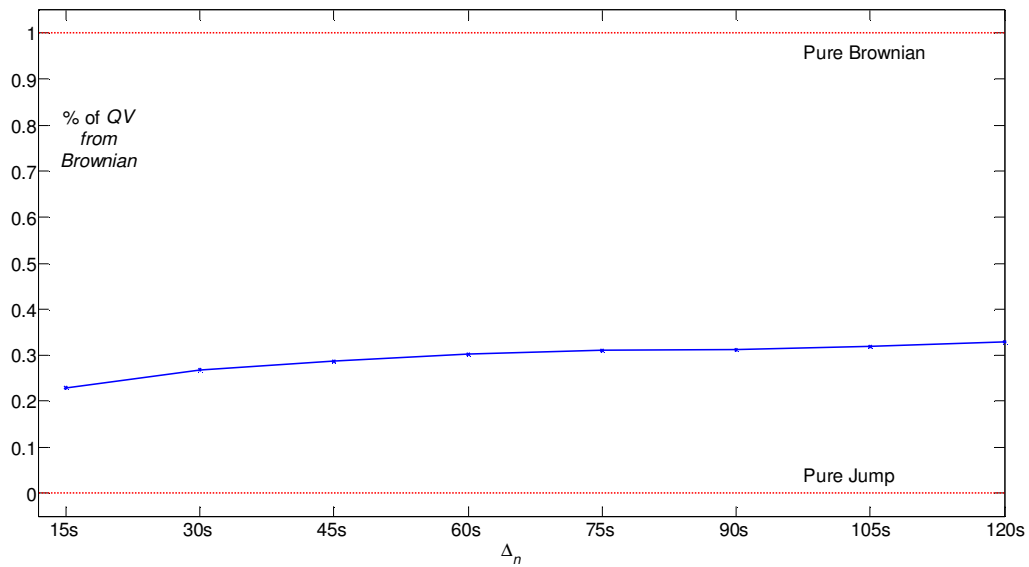
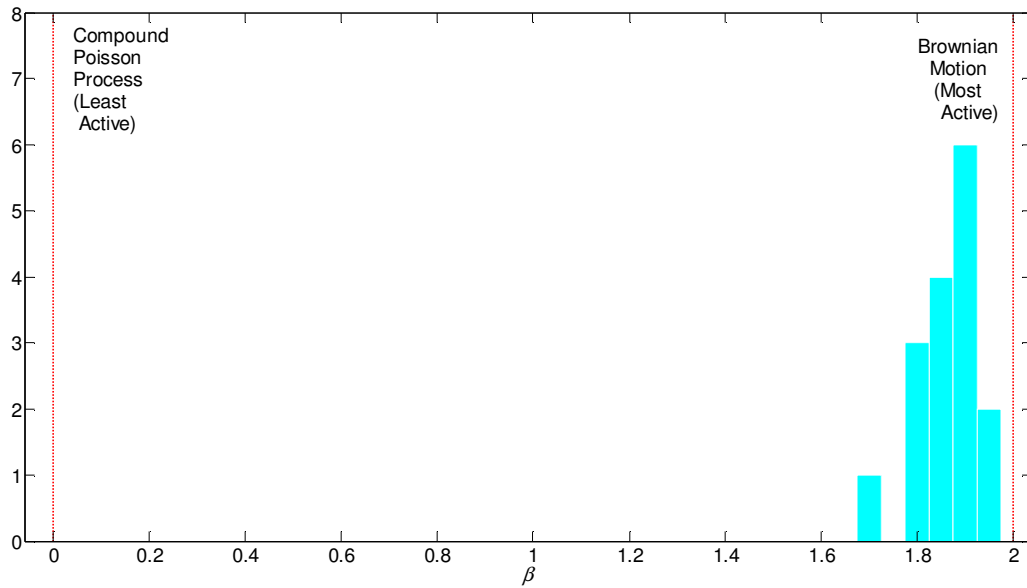


Figure 7. Fraction of QV attributable to Brownian component for VIX from Q4 2003 to Q2 2010. QV relative magnitude is examined in the presence of a jump and a continuous component. Panel A displays empirical distribution of fraction of QV attributable to Brownian component for VIX, whereas Panel B shows average proportion of QV attributable to the continuous component as a function of the sampling interval for VIX. The fraction of QV from the Brownian component using the twenty-seven quarters, values of η from 2 to 5 standard deviations, and Δ_n from 15 seconds to 2 minutes.

Panel A. Empirical distribution of the index of jump activity β for VIX



Panel B. Average value of the index of jump activity β as a function of the sampling interval

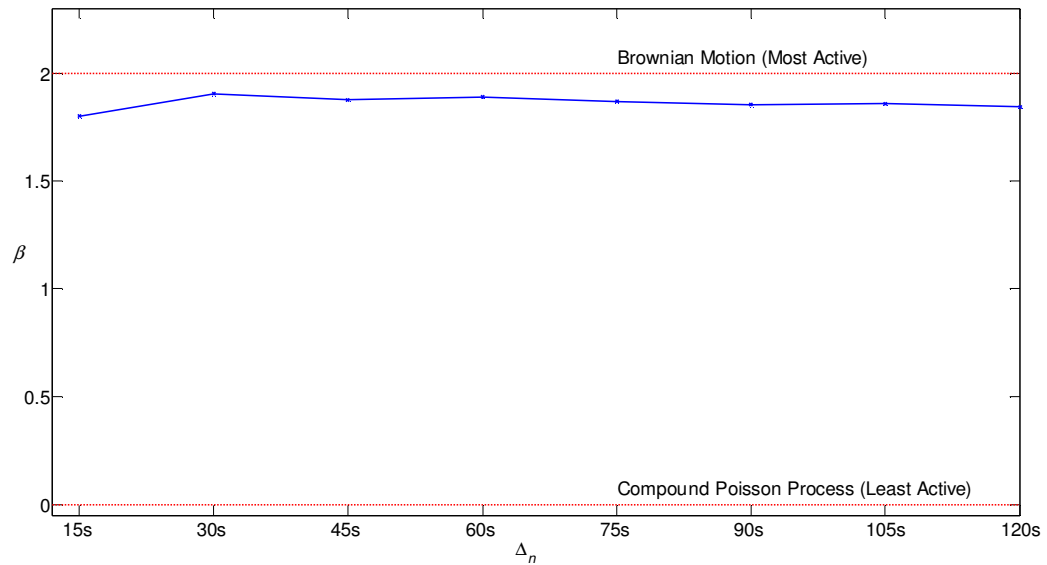


Figure 8. The index of jump activity β for VIX from Q4 2003 to Q2 2010. Panel A displays Empirical distribution of the index of jump activity β for VIX, whereas Panel B shows Average value of the index of jump activity β as a function of the sampling interval for VIX. The degree of infinite jump activity β is estimated using the twenty-seven quarters, values of γ ranging from 1.5 to 1.75, the value of η at 2, and Δ_n from 15 seconds to 2 minutes.

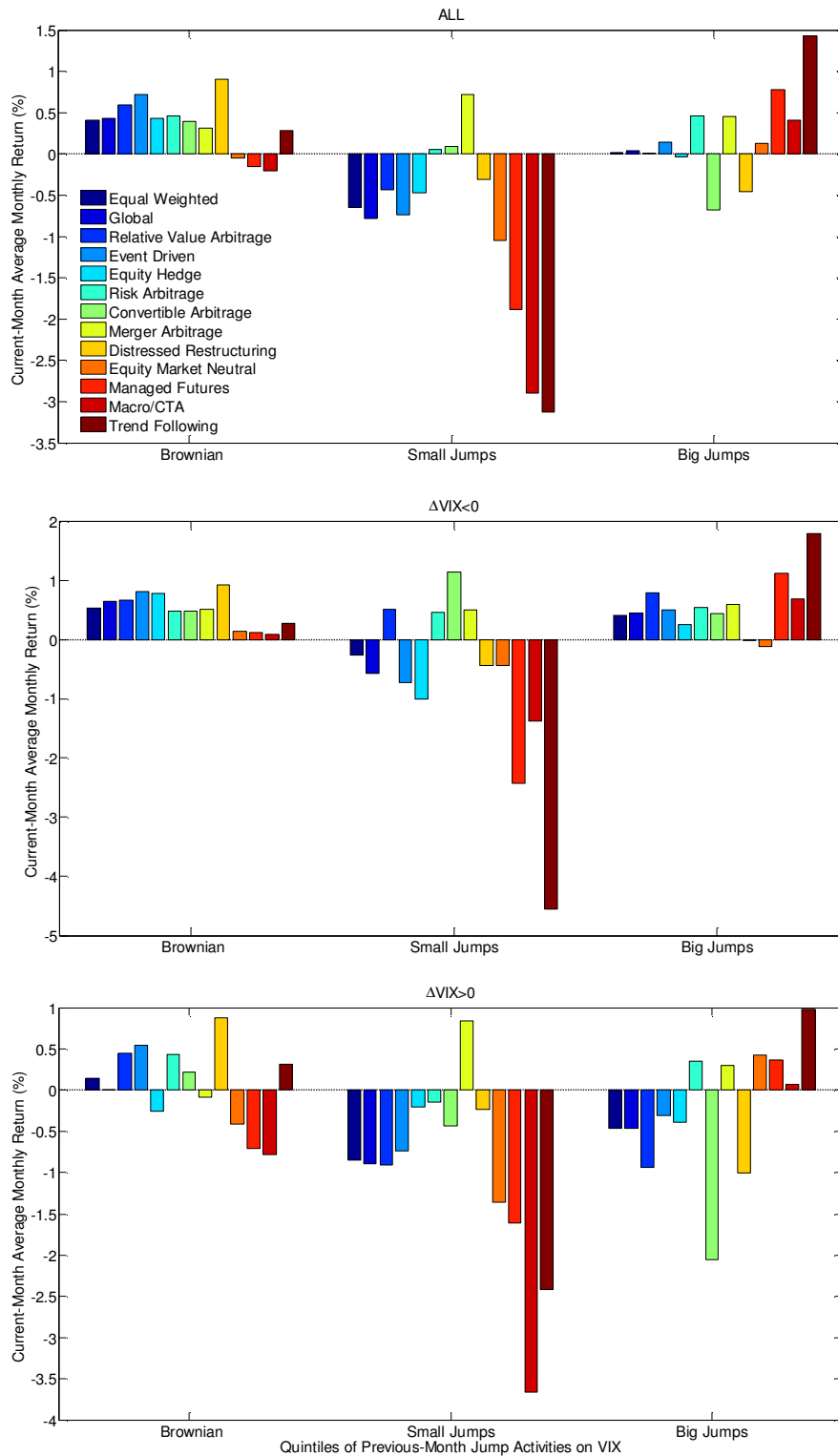


Figure 9. Out-of-sample monthly fund returns conditional on jump activities on ultra-high frequency VIX data. The graph reports out-of-sample average monthly returns of each sub-group over the sample period November 2003 to July 2010. Thirteen funds are sorted into three groups based on whether their previous months are dominated by Brownian motion, small jumps or big jumps. Within each group, we further split funds into those that have negative change in VIX in the previous month and those that do not.

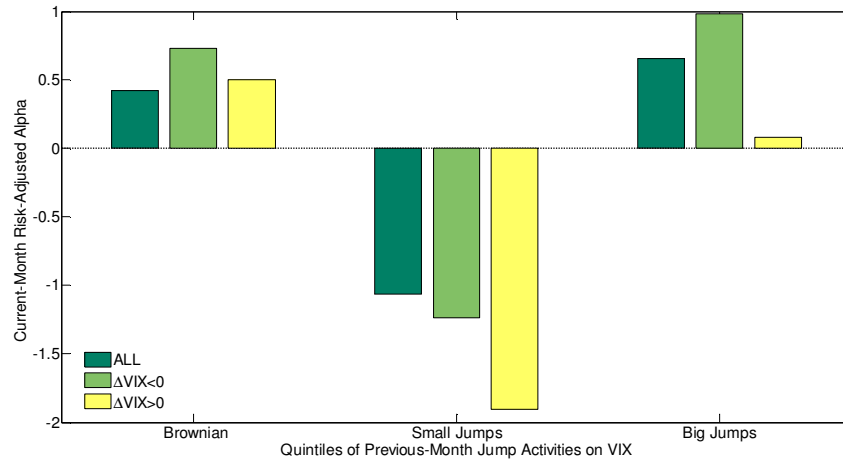


Figure 10. Out-of-sample monthly average risk-adjusted alpha. Thirteen hedge funds are sorted into three groups based on whether their previous months are dominated by Brownian motion, small jumps or big jumps. Within each group, we further split funds into those that have negative change in VIX in the previous month and those that do not. To adjusted risk, the study evaluates the performance of hedge funds relative to the 7-factor model. The graph reports out-of-sample risk-adjusted alpha of each sub-group over the sample period November 2003 to July 2010.

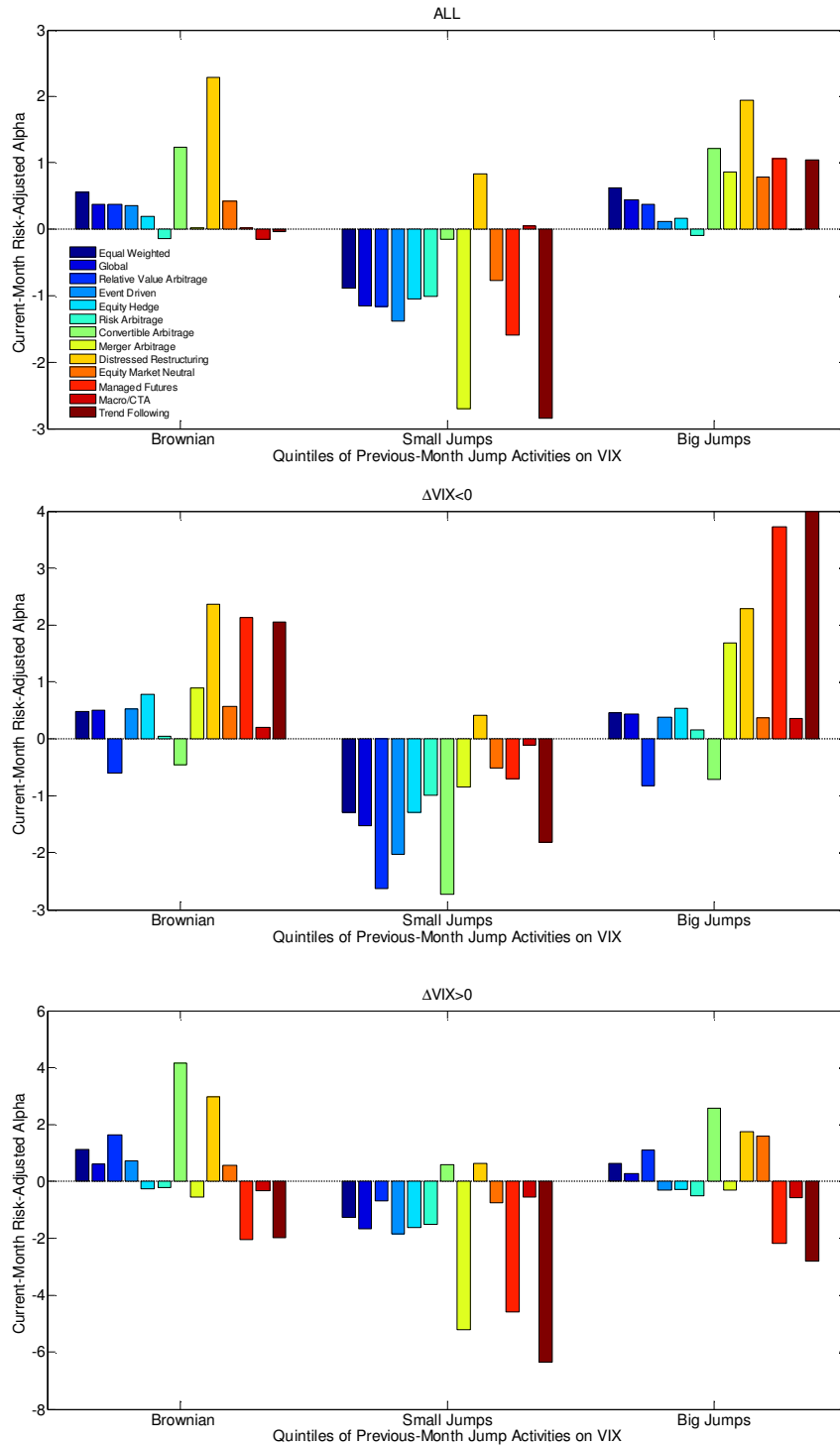


Figure 11. Out-of-sample risk-adjusted alpha. Thirteen hedge funds are sorted into three groups based on whether their previous months are dominated by Brownian motion, small jumps or big jumps. Within each group, we further split funds into those that have negative change in VIX in the previous month and those that do not. To adjusted risk, the study evaluates the performance of hedge funds relative to the 7-factor model. The graph reports out-of-sample risk-adjusted alpha of each sub-group over the sample period November 2003 to July 2010.